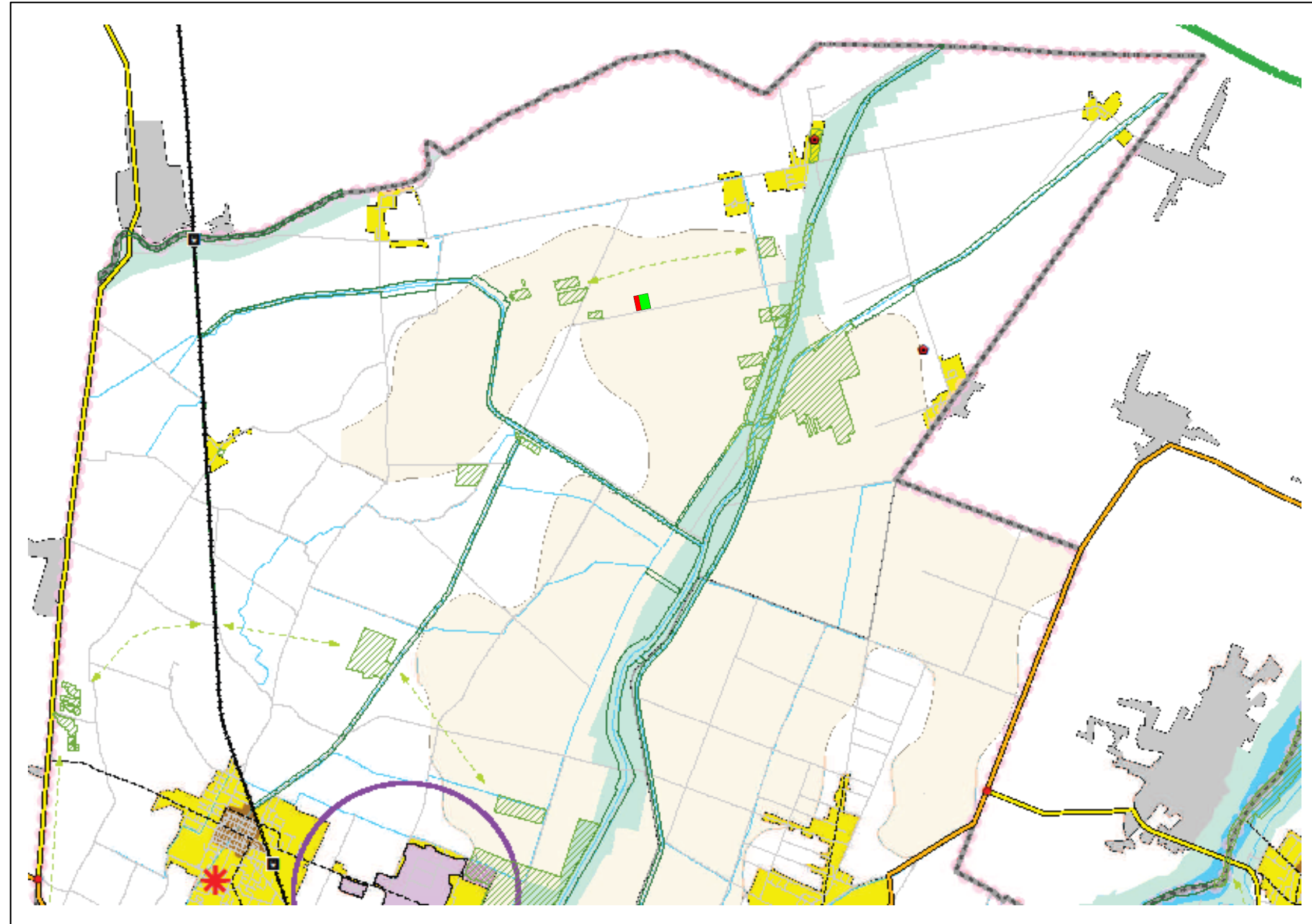
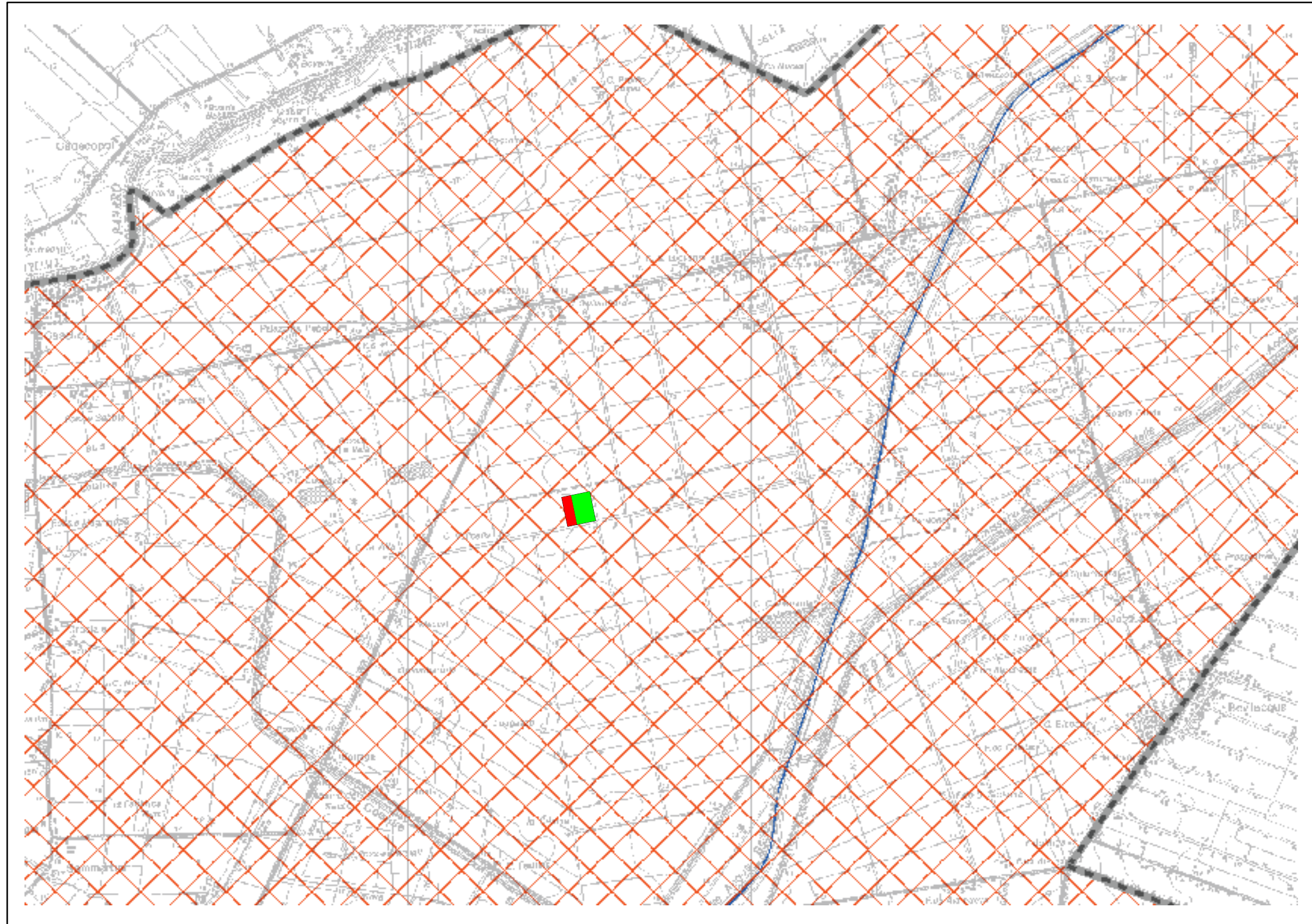


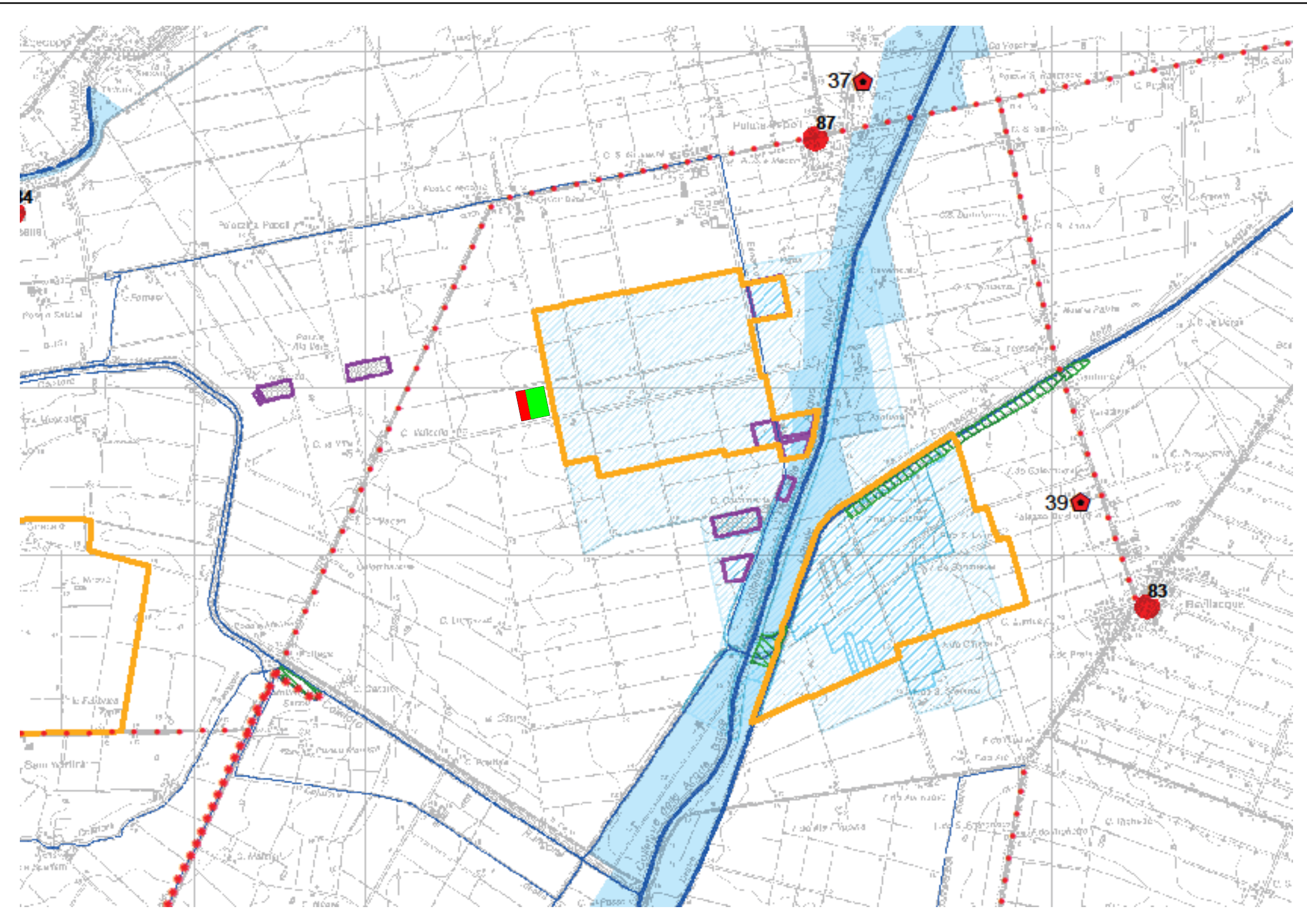
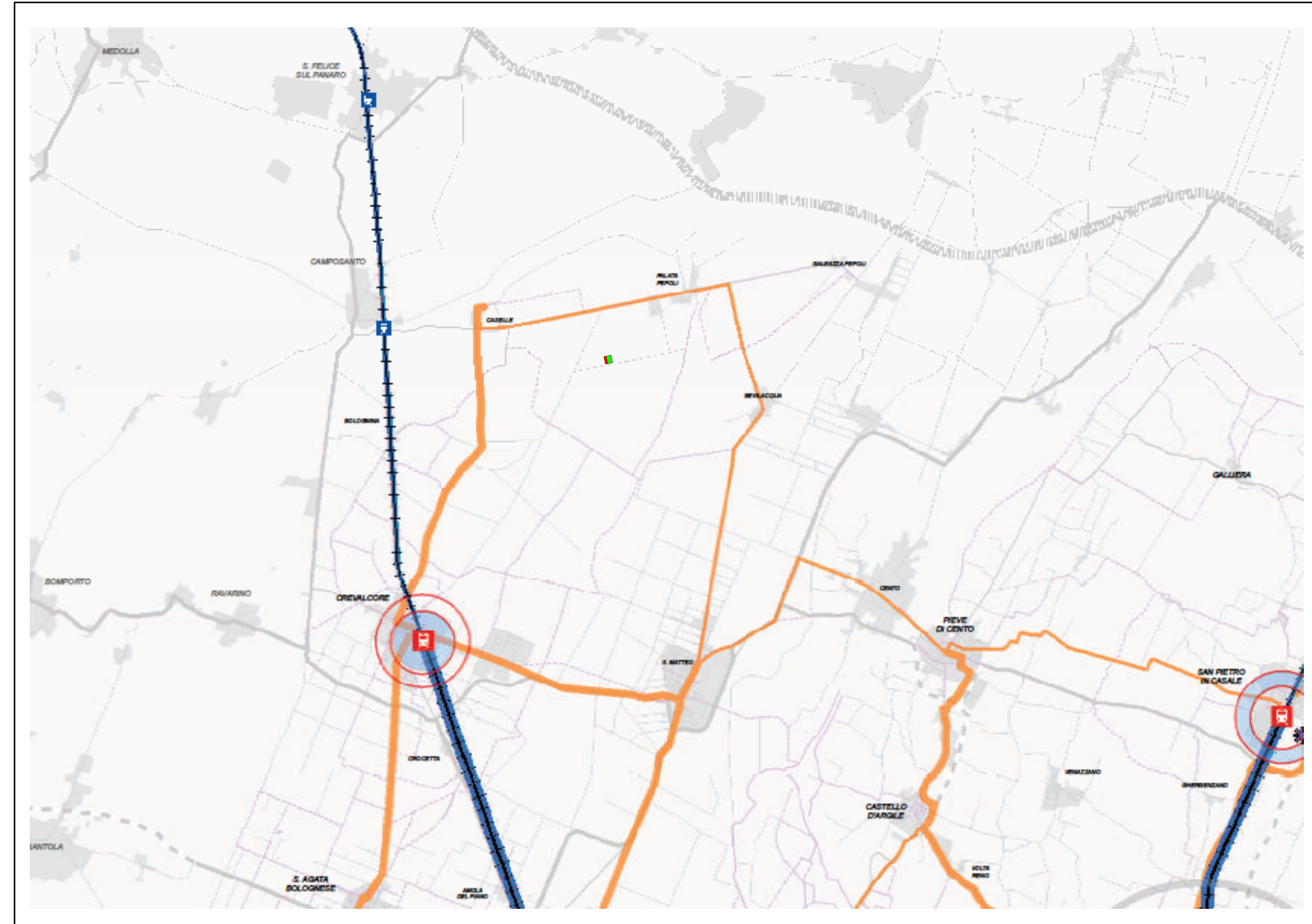


Redazione
STELLA 7 Srl
CONSULENZE AMBIENTALI
Dott. G. Rustichelli
Membro del Comitato Tecnico del CIC

In rosso l'ultimo ampliamento autorizzato
DGR 1818/2017



A horizontal scale bar with major tick marks every 1.000 m, labeled '0 m' at the left end and '5.000 m' at the right end.



A horizontal scale bar with vertical tick marks. The left end is labeled "0 m" and the right end is labeled "2.500 m". There are 10 equal intervals between the two labels, with a major tick mark at each interval.

