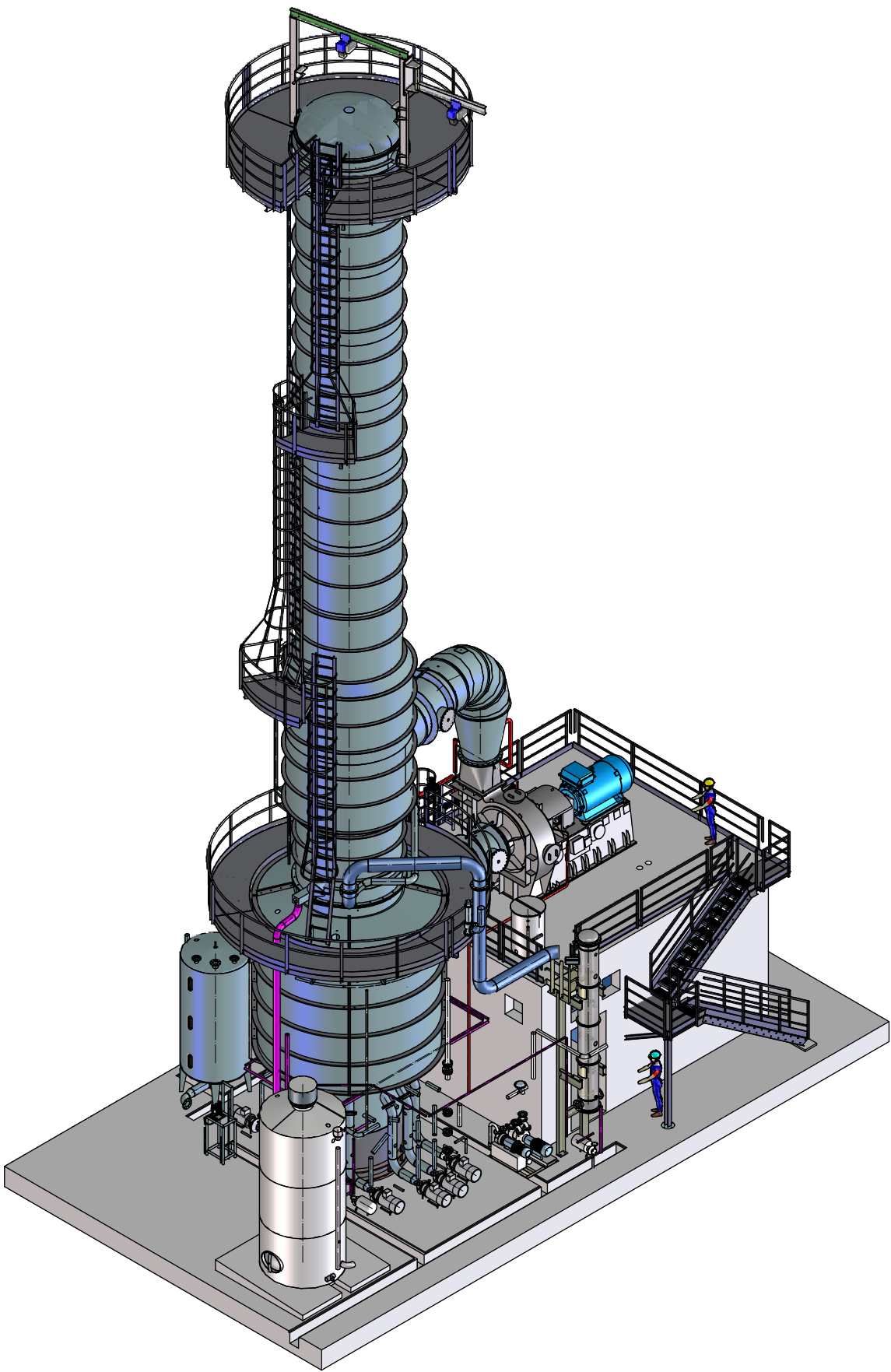
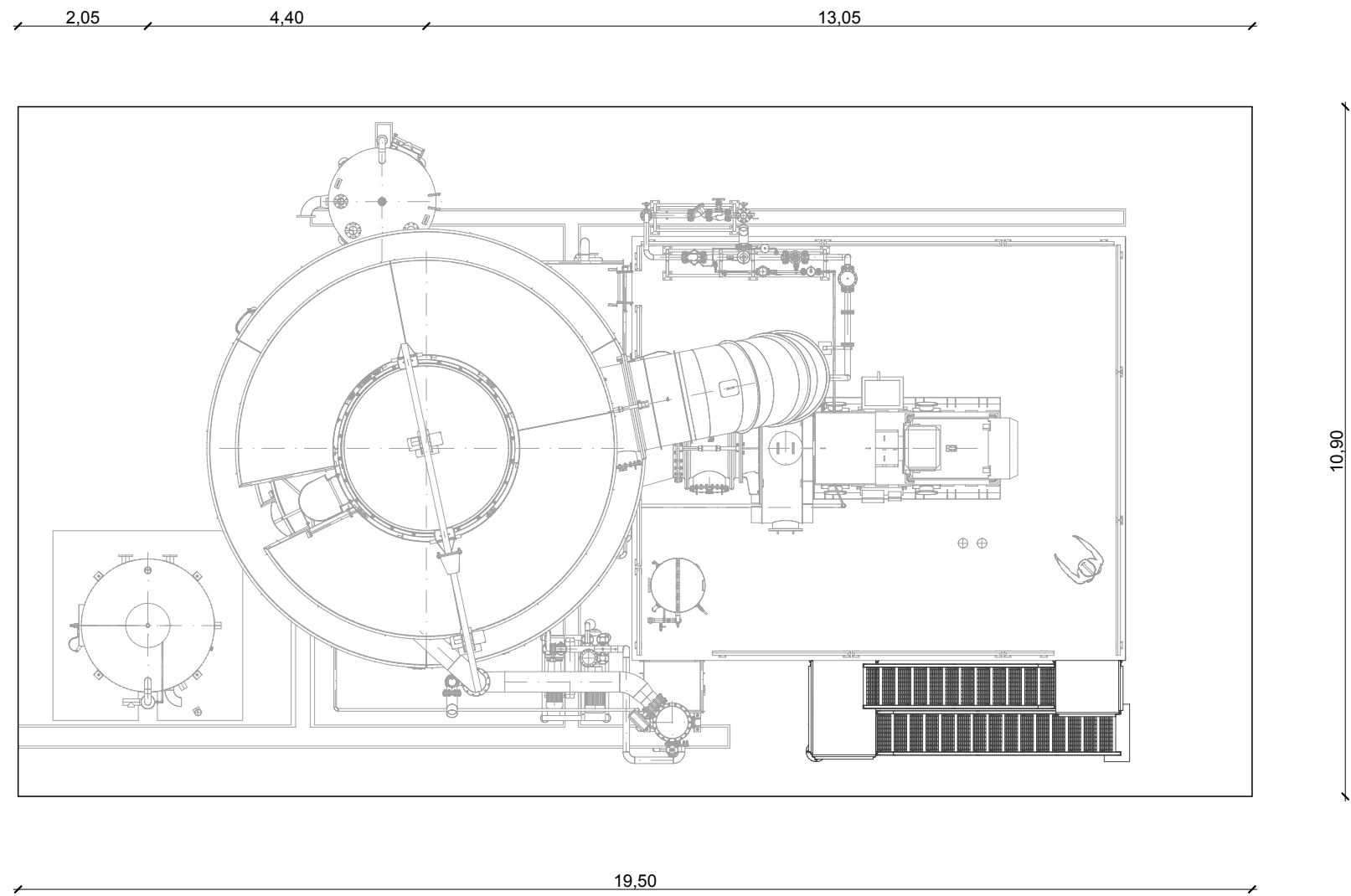
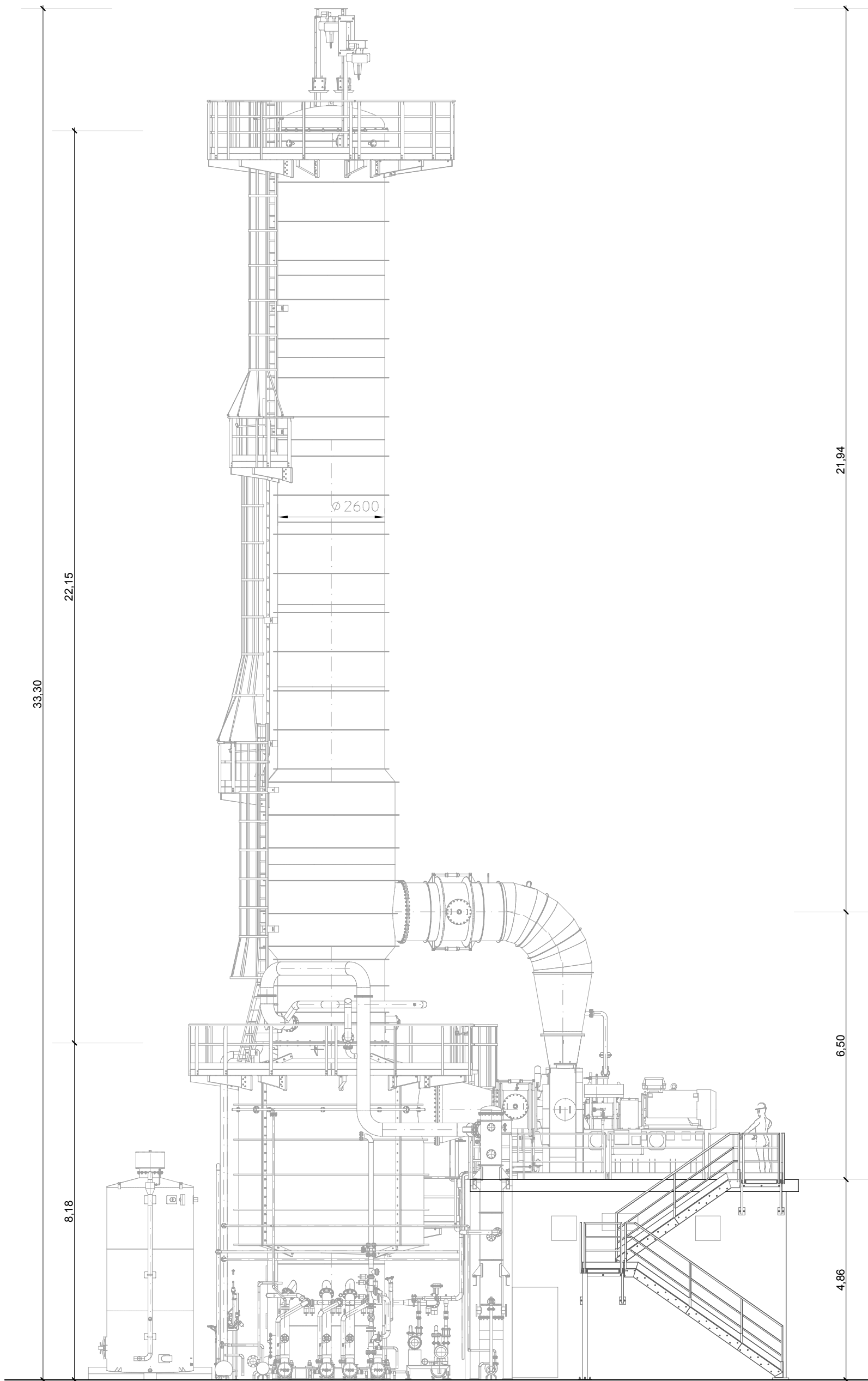
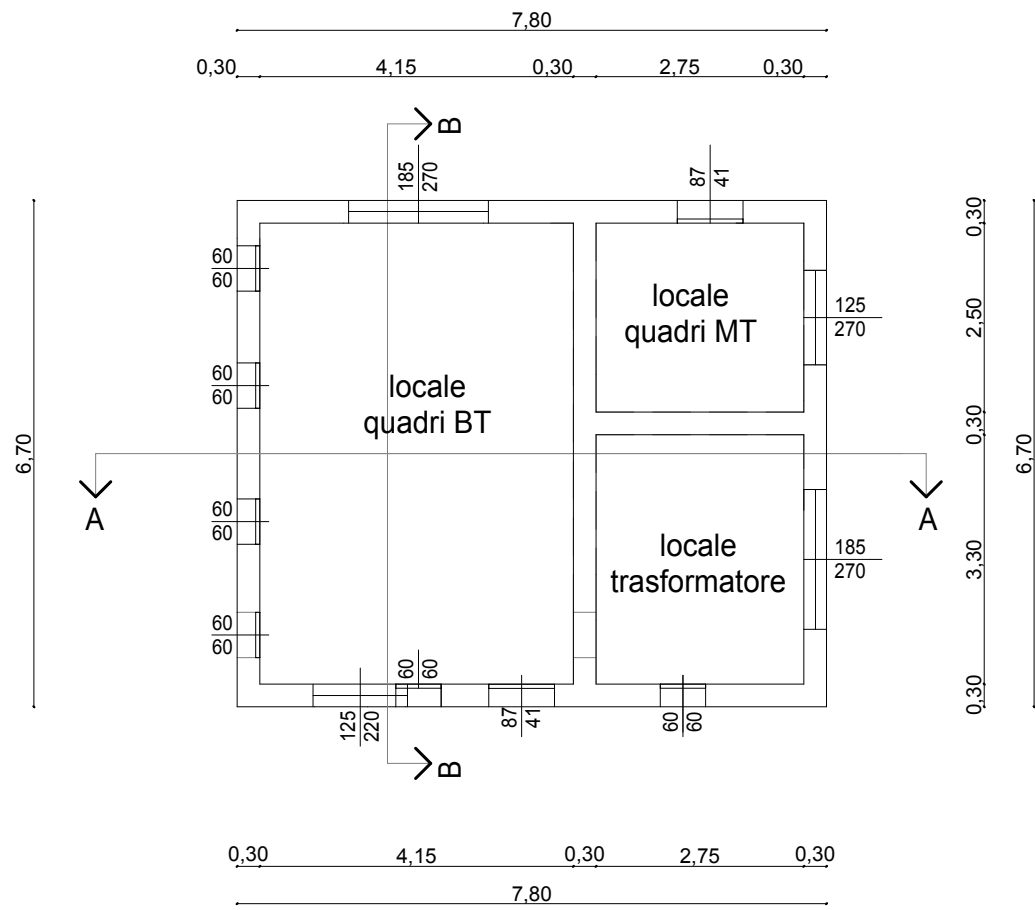
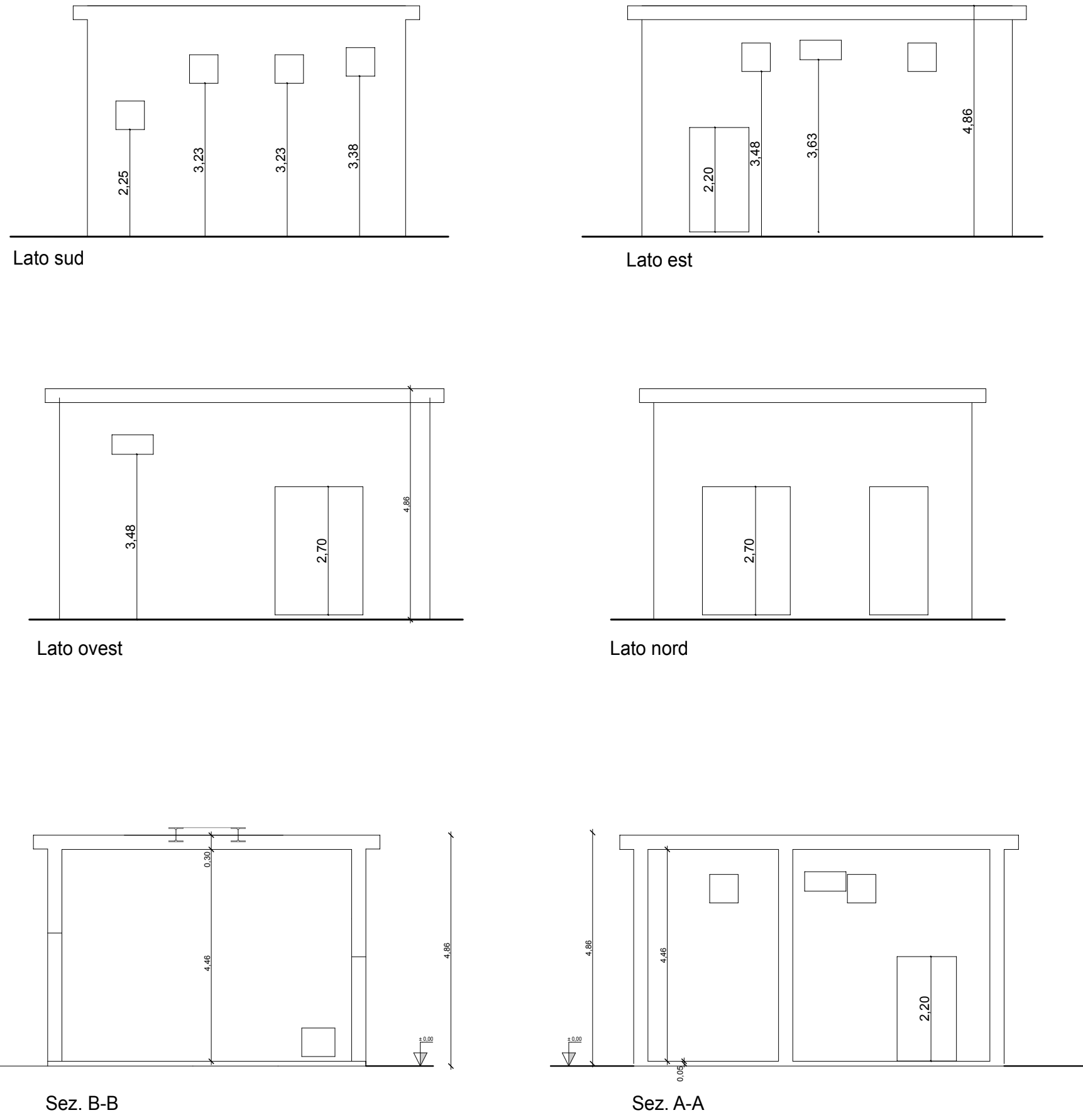



CABINA ELETTRICA CON QUADRI DI COMANDO



Vista assonometrica

Titolo tavola:	INTERVENTO C : IMPIANTO DI CONCENTRAZIONE (APOLLO)	TAV 07
Progetto:	PAUR PER AUMENTO CAPACITA' PRODUTTIVA	
Ubicazione:	PROVINCIA DI PARMA COMUNE DI MONTECHIARUGOLO Località Piazza	scala 1:200
Proprietà:	MUTTI s.p.a.	GIUGNO 2022
 Geom. Aldo Trombi via Montepelato sud n. 5/a 43022 Monticelli Terme (PR) tel. 0521/658306 cell. 3474616398 aldotrombi@aldotrombi.it		