

# PROSPETTI DELL'IMPIANTO

PROSPETTO NORD

A horizontal line representing a genomic map. At the left end, there is a dense cluster of green dots. Along the line, there are numerous small tick marks pointing upwards. At the right end, there is another dense cluster of green dots. In the top left corner, there is a small box containing the text "Scala 1:500".

PROSPETTO SUD	
---------------	--

A horizontal line representing a genomic track. At the left end, there is a dense cluster of green dots. The line is marked with numerous small, right-pointing tick marks. At the right end, there is another dense cluster of green dots. A small box in the top left corner contains the text "Scale 1:500".

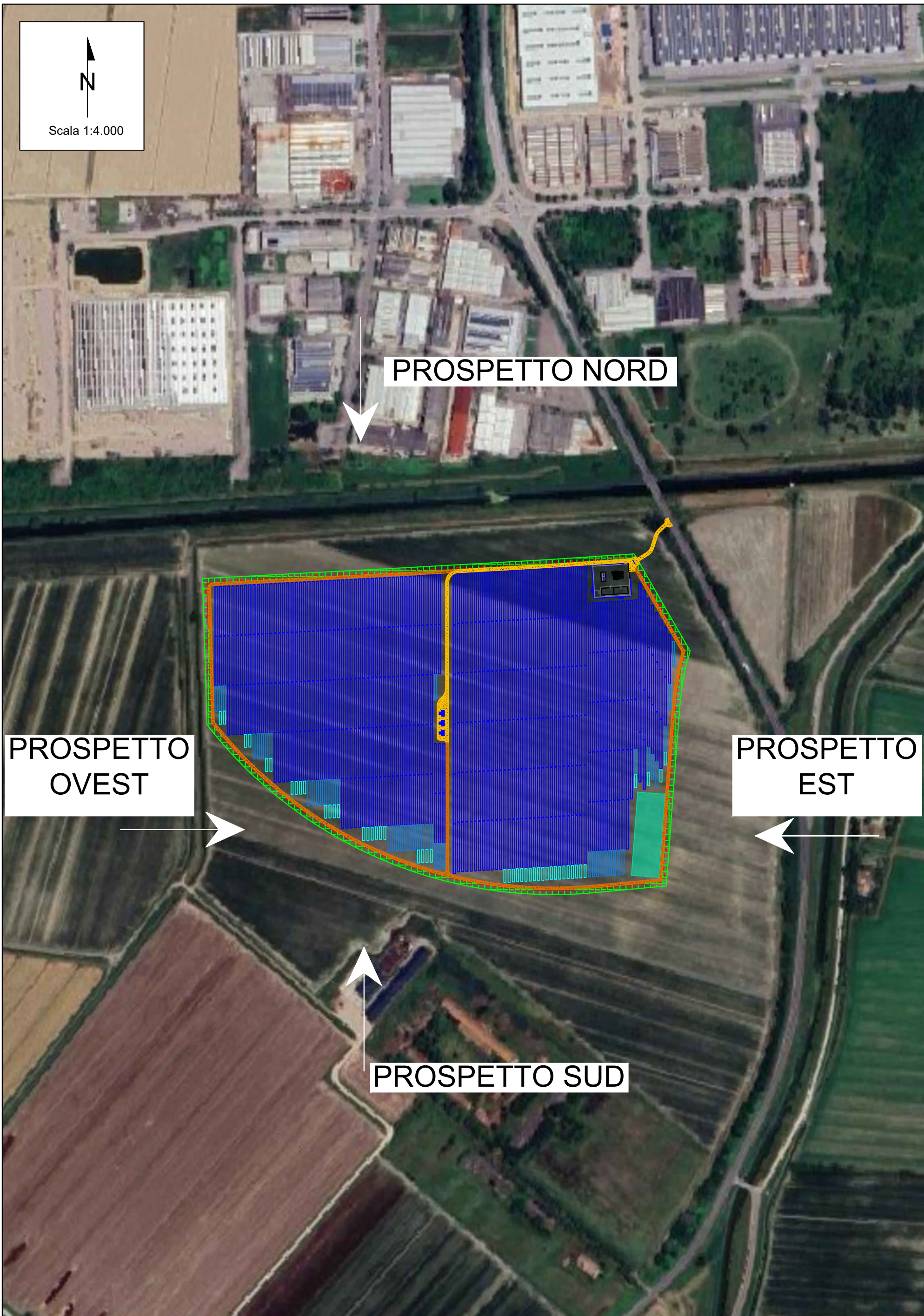
## PROSPETTO EST

The map shows a railway line running horizontally across the center. The line is represented by a double-track structure with a central track. Stations are marked with vertical lines and labels. The surrounding area is filled with a green, textured pattern representing vegetation or fields. A scale bar in the top left corner indicates a scale of 1:500. A north arrow is located in the top right corner.


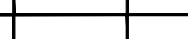

PROSPETTO OVEST

A horizontal line with green dots at both ends, representing a scale bar. The line is composed of many small segments, and the green dots are concentrated at the left and right ends.

INQUADRAMENTO DEL SITO
------------------------



## LEGENDA

- |   |  |
|---|--|
|  | Area di progetto                                   |
|  | Recinzione   |
|  | Recinzione Sottostazione di Energia (SEU) 30/36 kV |
|  | Accesso  |
|  | Fascia di mitigazione (5 m)                        |
|  | Strutture 1x48                                     |
|  | Strutture 1x24                                     |
|  | Strutture 1x12                                     |
|  | T.U. 5120 kVA                                      |
|  | Sottostazione elettrica di energia (SEU) 30/36 kV  |
|  | Visibilità interna (3,5 m)                         |
|  | Visibilità interna di servizio (3 m)               |
|  | Vasca di laminazione                               |

[illegible]