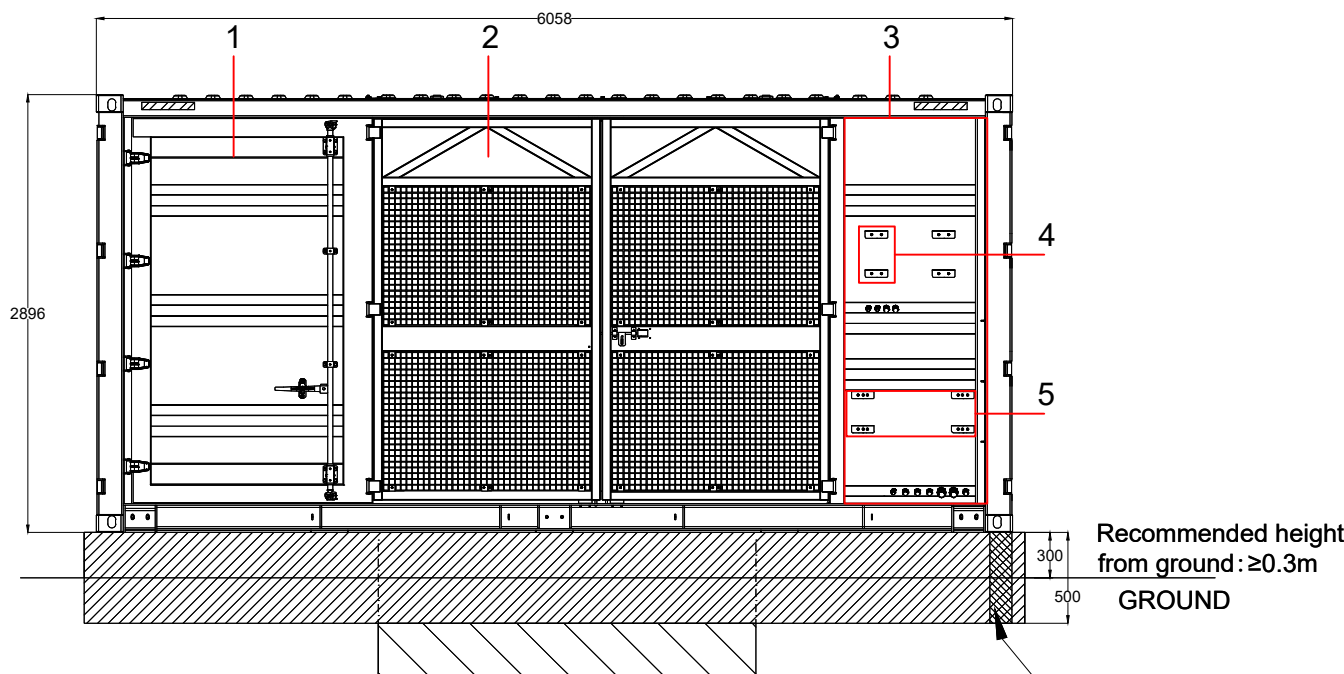


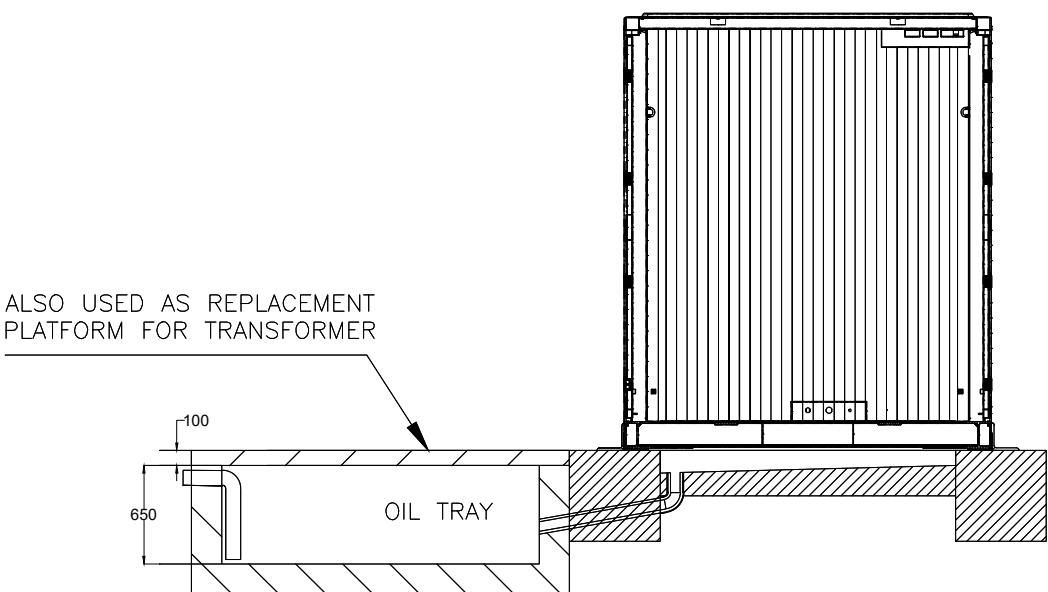
TIPOLOGICO TRANSFORMATION UNIT

Scala 1:50

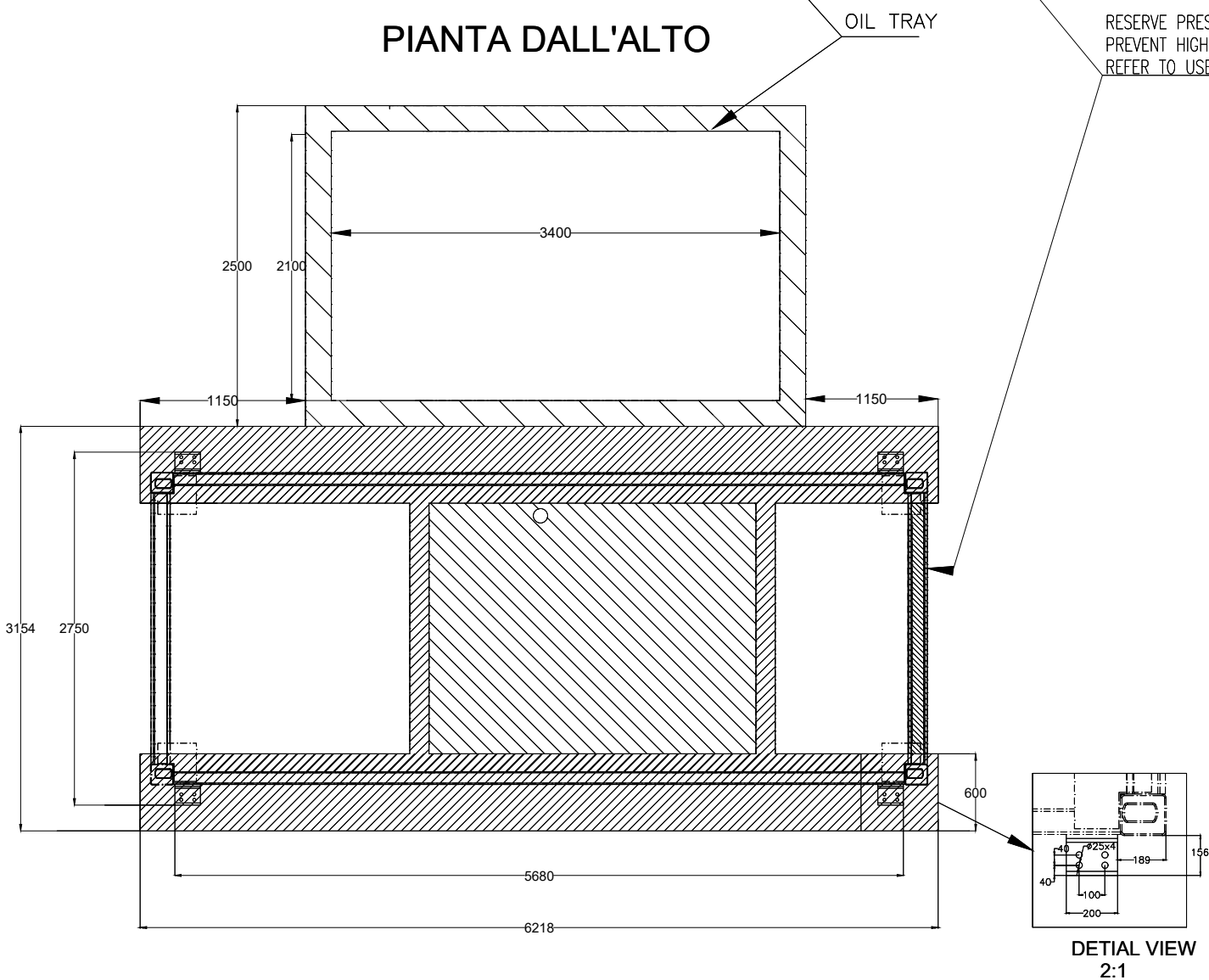
PROSPETTO POSTERIORE



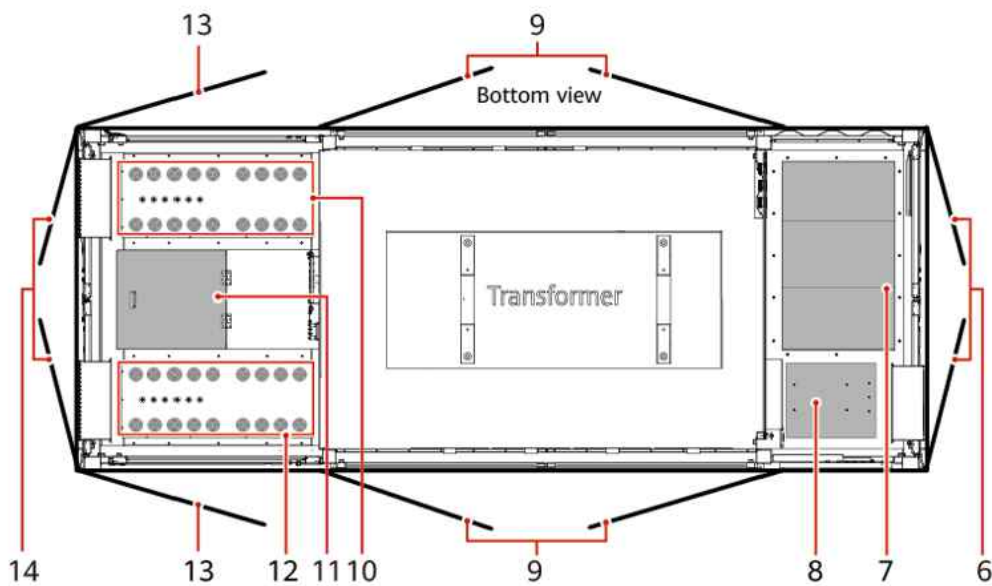
PROSPETTO LATERALE



PIANTA DALL'ALTO



VISTA DALL'ALTO




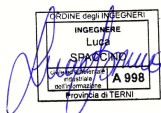
Misure espresse in millimetri

Le dimensioni di ciascun basamento di cemento non devono essere inferiori a 6218x600x500 mm e il contenitore deve essere posizionato al centro della fondazione. L'altezza della colonna deve essere determinata in base alla situazione reale in sito.

Le dimensioni non contrassegnate devono essere determinate in base alle condizioni in sito in fase di progettazione esecutiva.

LEGENDA PIANTA CABINATO DALL'ALTO

- | | | |
|---|--|---|
| (1) Low-voltage room (LV) | (2) Transformer room (TR) | (3) Medium-voltage room (MV) |
| (4) Position for the distributed power system (uninterruptible power supply, UPS) | (5) Position for the smart array controller (SACU) | (6) Double-swing door of the MV room |
| (7) Ring main unit | (8) Auxiliary transformer | (9) Double-swing screen door for the transformer room |
| (10) AC input cable hole (LV PANEL B) | (11) Manhole entrance | (12) AC input cable hole (LV PANEL A) |
| (13) Single-swing door for the LV room | (14) Double-swing door for the LV room | |

| | | | | | | |
|---|------------|--|-------------|---------|-------------|----------|
| | | | | | | |
| | | | | | | |
| 00 | 31/01/2025 | Emissine definitiva | | | | |
| REV. | DATE | DESCRIPTION | PREPARED | CHECKED | APPROVED | |
| CONTRACTOR'S LOGO | | PROJECT: <i>Progetto di un impianto fotovoltaico denominato "Fabbrico" da realizzarsi nel comune di Fabbrico (RE), e delle relative opere di connessione da realizzarsi nei comuni di Fabbrico (RE), Rio Saliceto (RE) e Carpi (MO)</i> | | | | |
|  | | FILE NAME: FAB.ENG.TAV.013.00_TIPOLOGICO TRANSFORMATION UNIT.DWG | | | | |
| | | | | | | |
| CLIENT'S LOGO | | CLASSIFICATION: | FORMAT: | SCALE: | PLOT SCALE: | |
| <i>ATLAS SOLAR 13 SRL</i> | | Company | A2 | 1:50 | 1:1 | |
| | | TITLE: | | | | |
| CLIENT VALIDATION | | Tipologico Transformation Unit | | | | |
| VALIDATED BY | |  | | | | |
| VERIFIED BY | | | | | | |
| COLLABORATORS | | | | | | |
| | | | | | | |
| | | UTILIZATION SCOPE: | CLIENT CODE | | | |
| | | Basic Design | IMP | GROUP | DOC | |
| | | | FAB | ENG | TAV | |
| | | | | | PROGRESSIVE | REVISION |
| | | | | | 013 | 00 |
| This document is property of Atlas Solar 13 S.r.l. It is strictly forbidden to reproduce this document, in whole or in part, and to provide to others any related information without the previous written consent by Atlas Solar 13 S.r.l. | | | | | | |