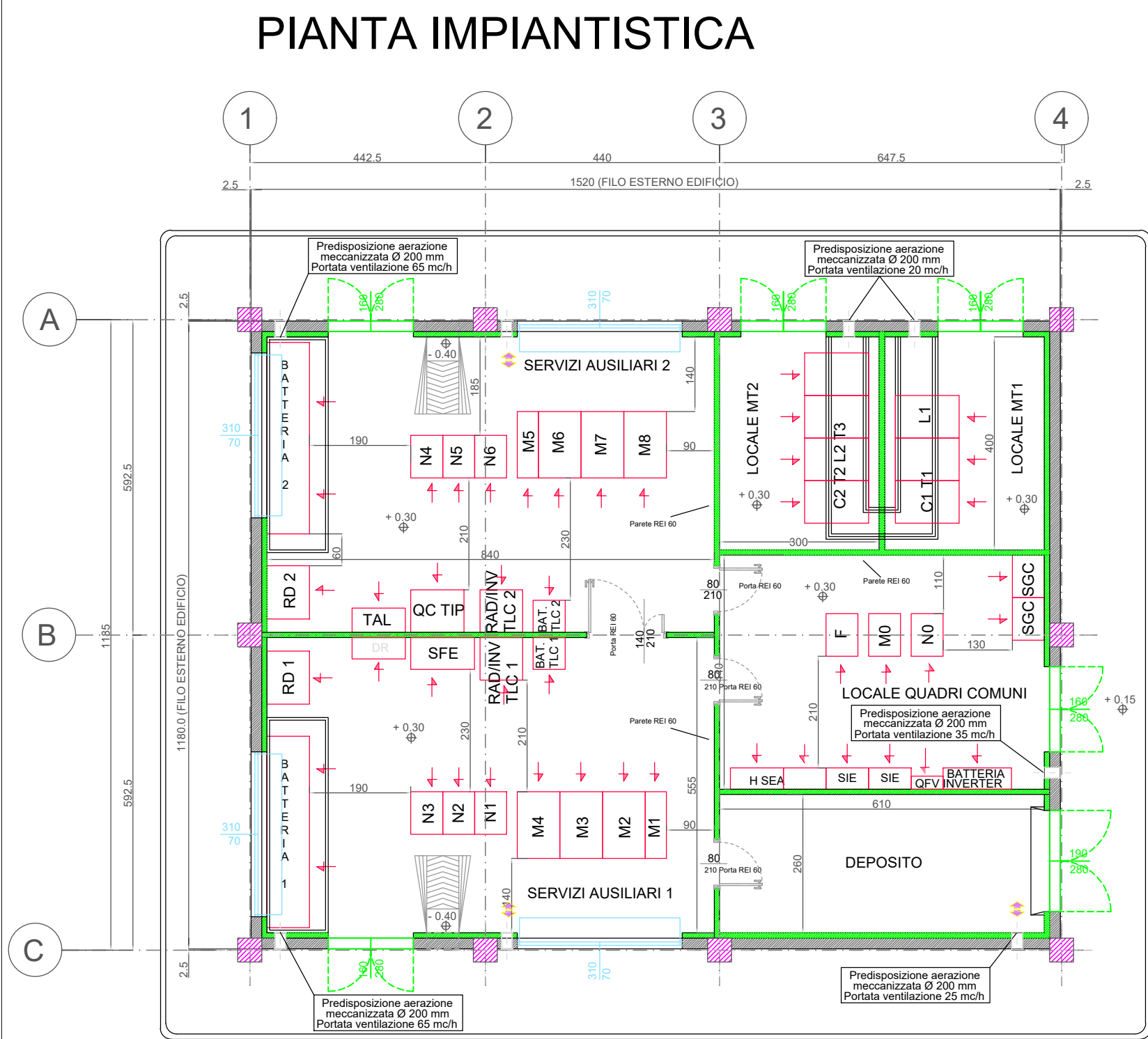


## EDIFICIO SERVIZI AUSILIARI - PIANTE, PROSPETTI E SEZIONI

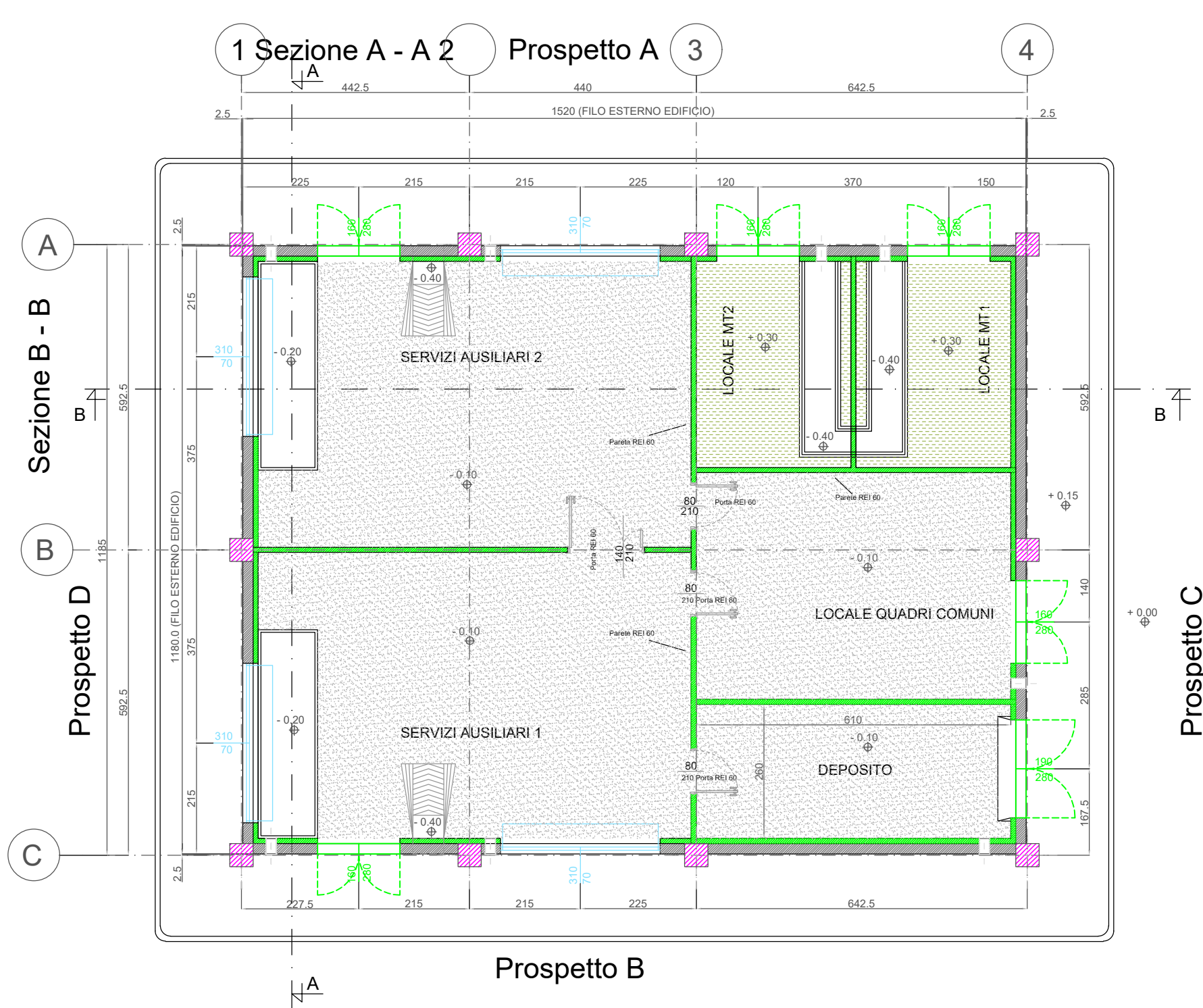
Pianta\_edificio servizi ausiliari

Scala 1:100



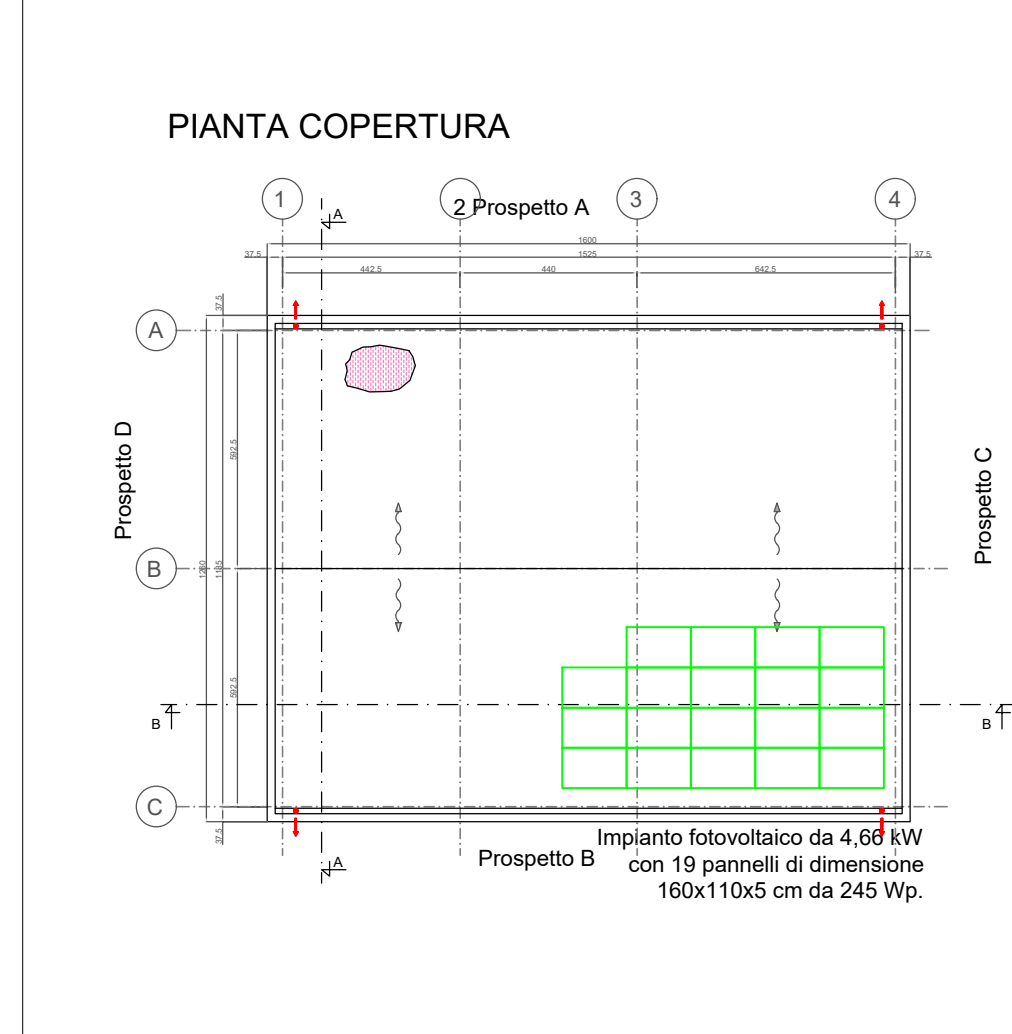
## Pianta delle finiture

Scala 1:100



**Pianta copertura**

Scala 1:100














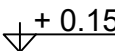
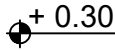
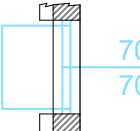
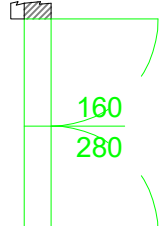
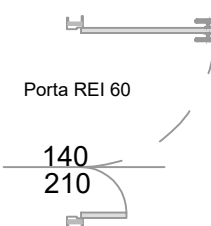
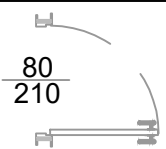
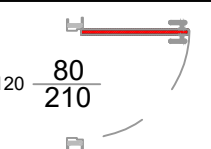
## NOTE GENERALI

La posizione dei pannelli è indicativa ed andrà confermata in sede di progetto esecutivo.

I locali servizi ausiliari e quadri comuni sono provvisti di pavimento flottante e controsoffitto; i locali MT e deposito solo del controsoffitto.

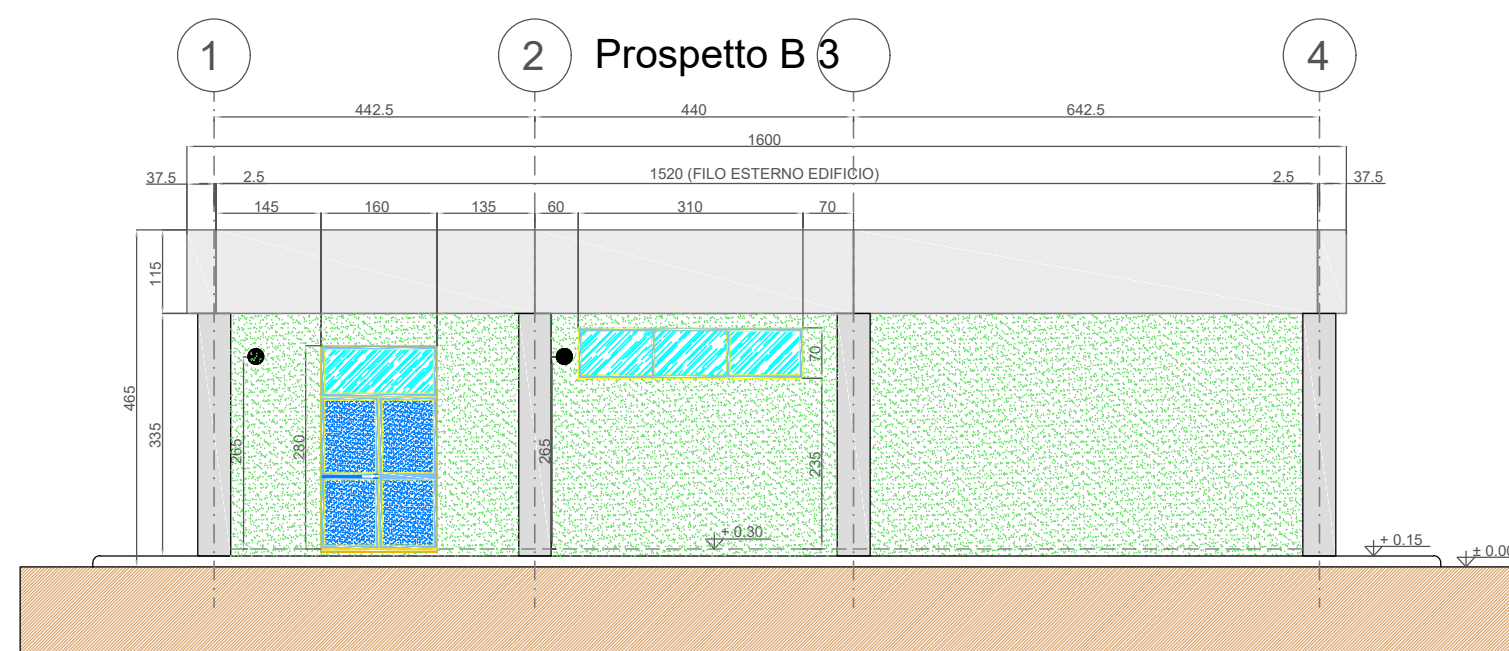
Le quote in tavola sono espresse in cm.

### LEGENDA PIANTA

	PANNELLO DI TAMPONAMENTO PREFABBRICATO		
	PILASTRI		
	PARETI E CONTROPARETI IN CARTONGESSO CON IDROLASTRA		
	PARETI IN CARTONGESSO REI 60		
	PARETI IN CARTONGESSO REI 120		
	PARETE VETRATA TRA SALA CONTROLLO E SALA COMANDI		
	RIVESTIMENTO CON PIASTRELLA STESSA TIPOLOGIA PAVIMENTO		
	PAVIMENTAZIONE CON PIASTRELLE IN GRES BATTISCOPI A MEZZA PIASTRELLA DELLA STESSA TIPOLOGIA		
	PAVIMENTO INDUSTRIALE GRIGIO CON TRATTAMENTO ANTIPOLVERE		
	PAVIMENTO INDUSTRIALE GRIGIO CON TRATTAMENTO ANTIPOLVERE		
	SCARICHI ACQUE PIOVANE		
	QUOTE SUI PROSPETTI		
	QUOTE IN PIANTA		
	FINESTRE		
	PORTE ESTERNE		PORTE INTERNE REI 60
	PORTE INTERNE		PORTE ESTERNE REI 120

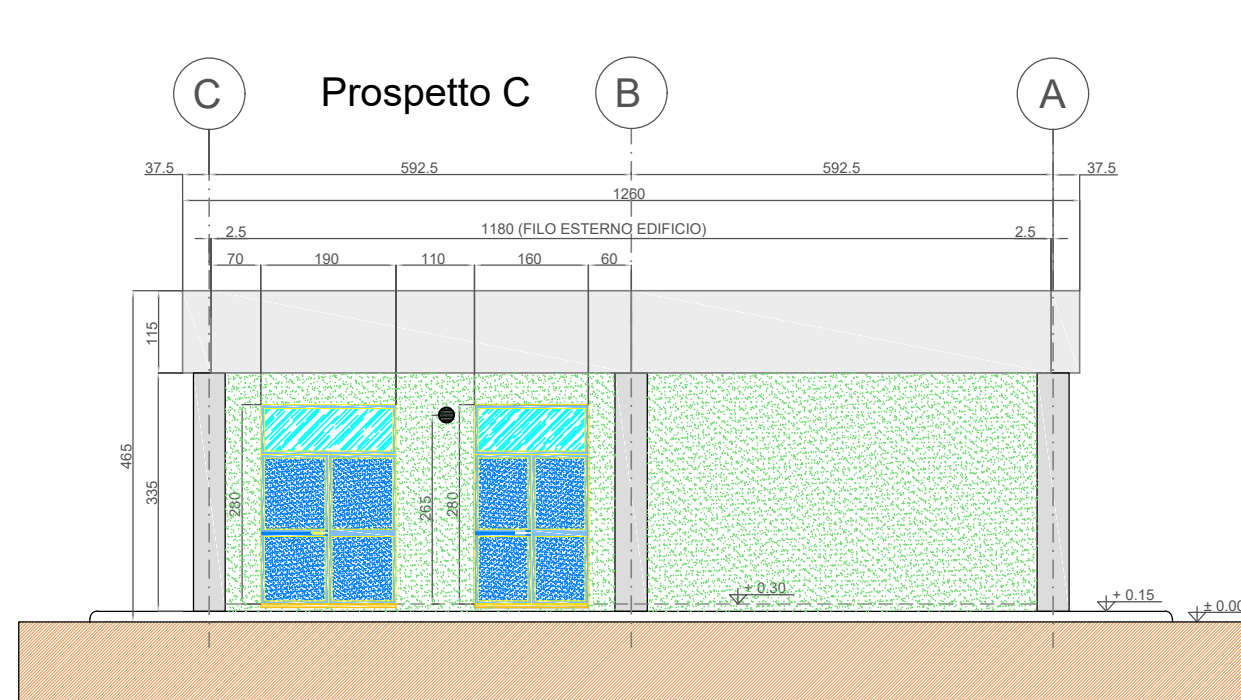
## Prospetti

Scala 1:100



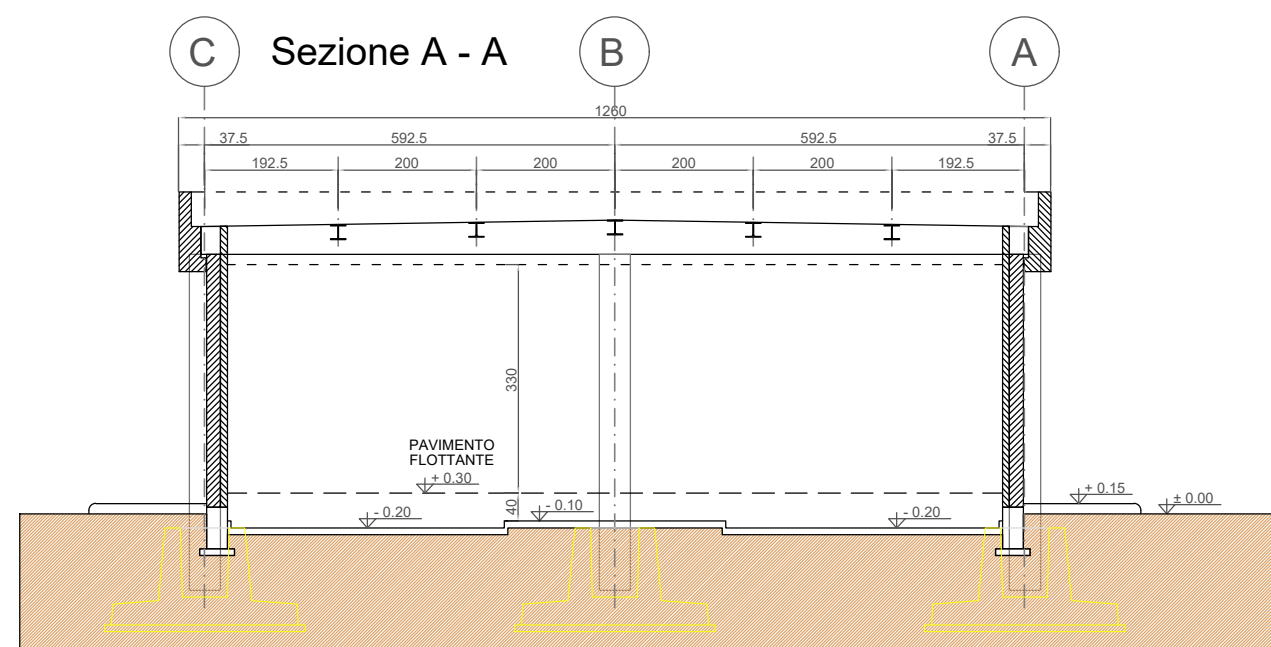
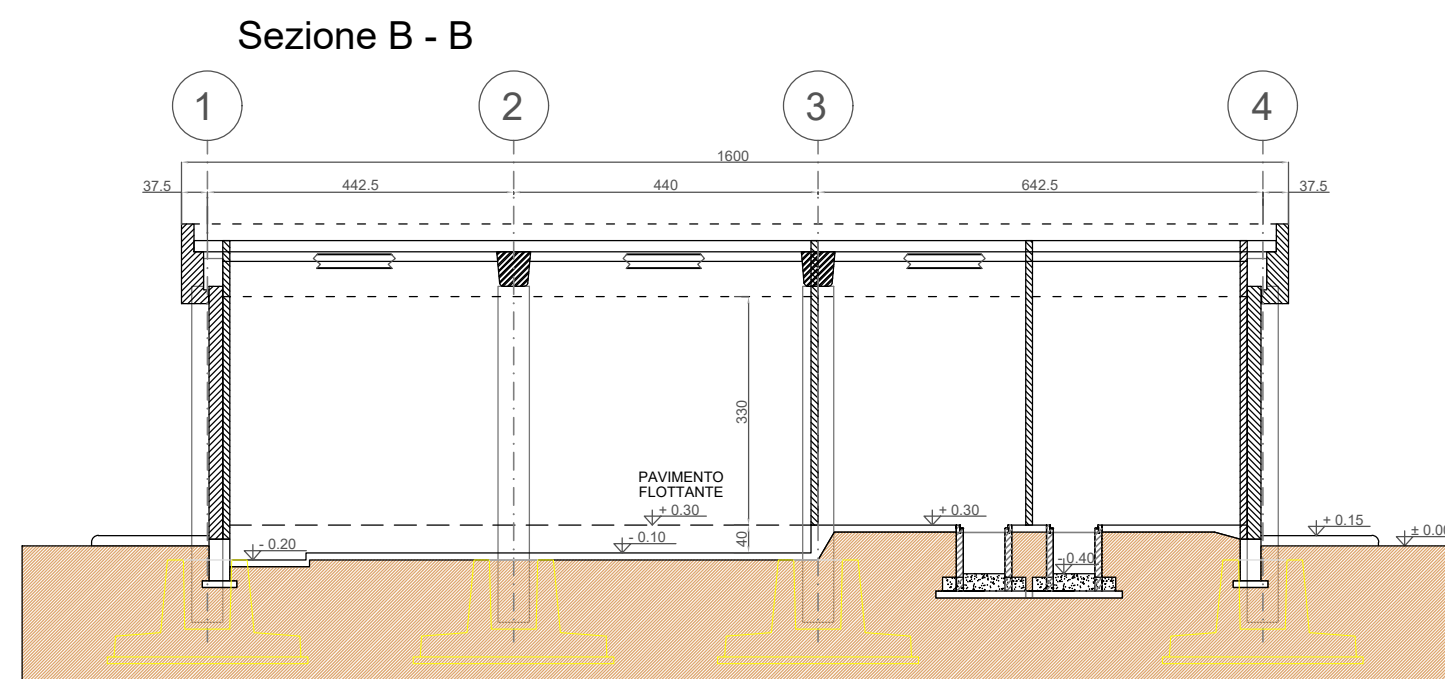
## Prospetti

Scala 1:100



Sezioni

Scala 1:100

**TERNA S.p.A.**

**Viale Egidio Galbani, 70 - 00156 Roma**

COMUNE DI ROVIGO (RO)

**NUOVA STAZIONE ELETTRICA SE RTN 132/36 kV  
DA INSERIRE IN ENTRA-ESCI ALLE LINEE RTN 132 kV  
"SAN BELLINO-ROVIGO ZI" E "CANARO CP-ROVIGO RT"**

Codice Pratica: 202102138
---------------------------

Tipo: PIANTA, PROSPETTI E SEZIONI EDIFICIO  
**SERVIZI AUSILIARI**

Scala: 1:100

Elaborato:  
202102138 PTO 04C\_00

Formato: A1

Data: Maggio 2025

Committente:

**AIEM GREEN S.R.L.**

Viale C. Alleati D'Europa n. 9p| 45100- Rovigo (RO)

**C.F. e P.IVA 01627270299**

Società richiedente la connessione:

PROGETTANDO S.R.L.

Via Caterino Davila, n.11 35028 - Piove di Sacco (PD)

**C.F. e P.IVA 04048490280**

Progettazione:

MATE System srl

Via Goffredo Mameli, n.5  
70020 - Cassano delle Murge (BA)  
Tel. +39 080 5746758  
Mail: [info@matesystemsrl.it](mailto:info@matesystemsrl.it) | Pec: [matesystem@pec.it](mailto:matesystem@pec.it)

Progettista:  
Ing. Francesco Ambron

## Estremi per il benessere di Terna:

Rev. n°	Data	Descrizione	Redatto	Controllato	Approvato
00	23/05/2025	1° Emissione - presentazione per benessere TERNA	AHMAD	ADORNO	AMBRON

Questo documento contiene informazioni di proprietà della società Mate System srl e deve essere utilizzato esclusivamente dal destinatario in relazione alle finalità per le quali è stato ricevuto. E' vietata qualsiasi forma di riproduzione o di divulgazione senza esplicito consenso della Mate System srl.  
This document contains information proprietary to the company Mate System srl and it will have to be used exclusively for the purposes for which it has been furnished. Whichever shape of spreading or reproduction without the written permission of Mate System srl is prohibit.