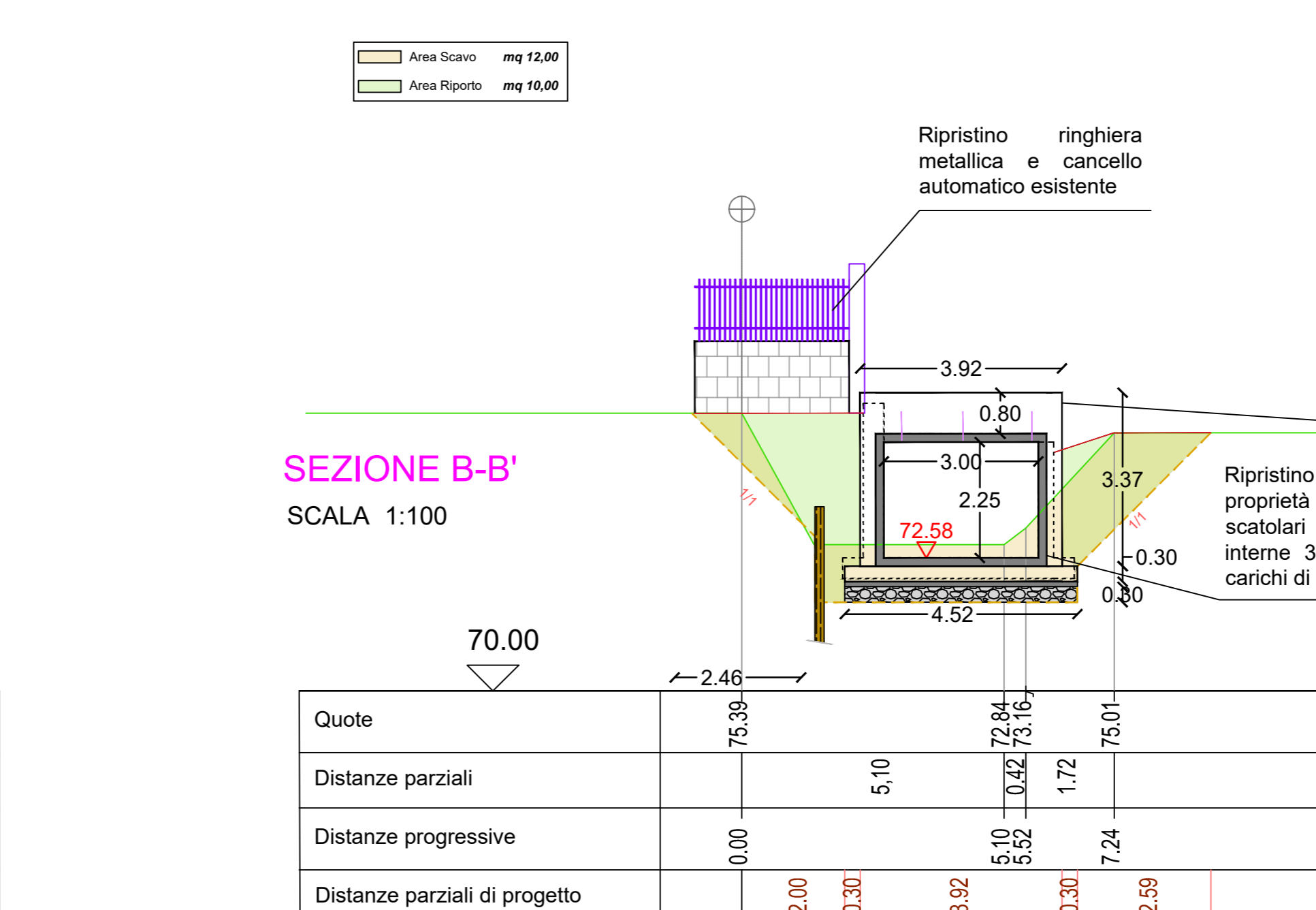
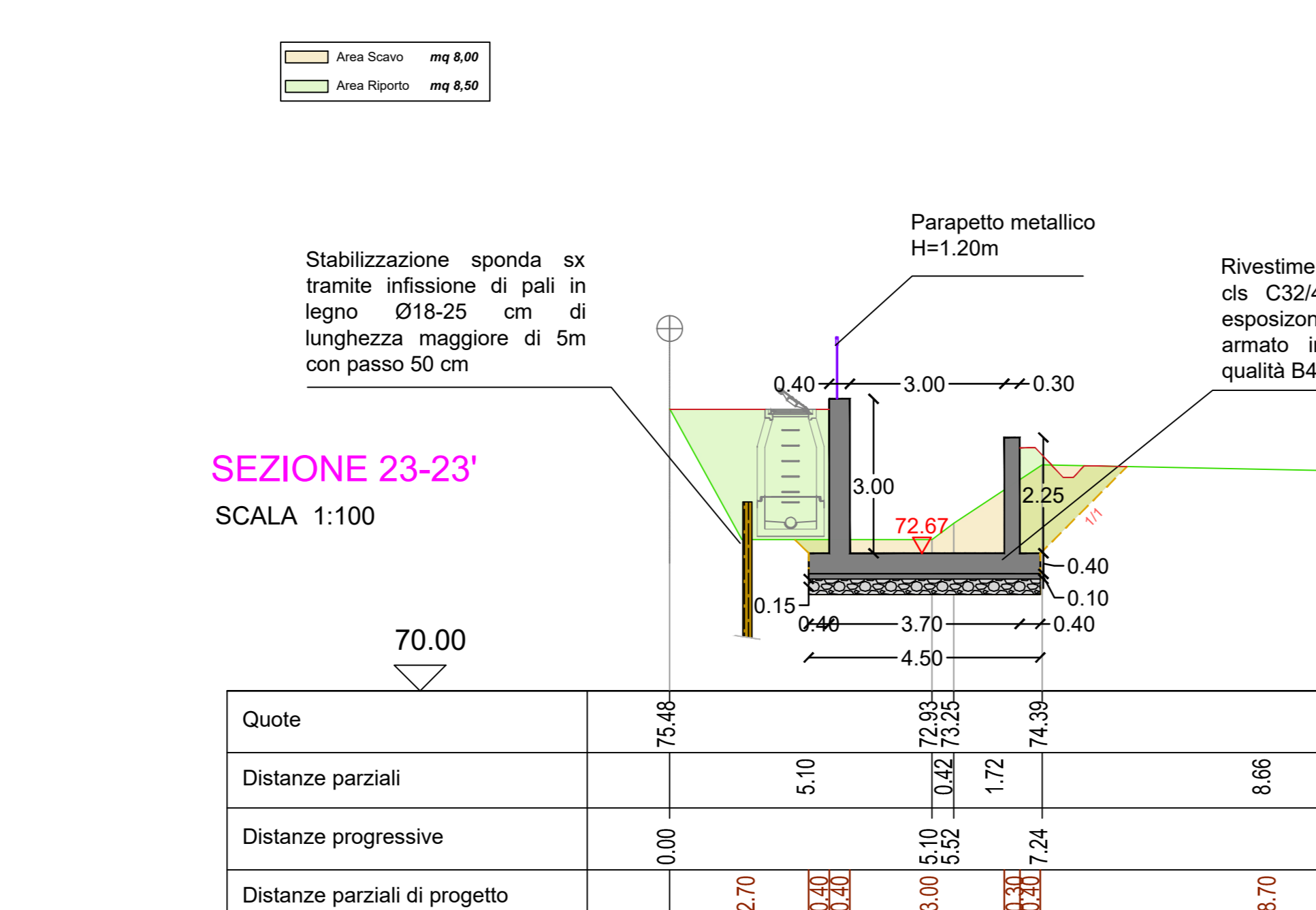
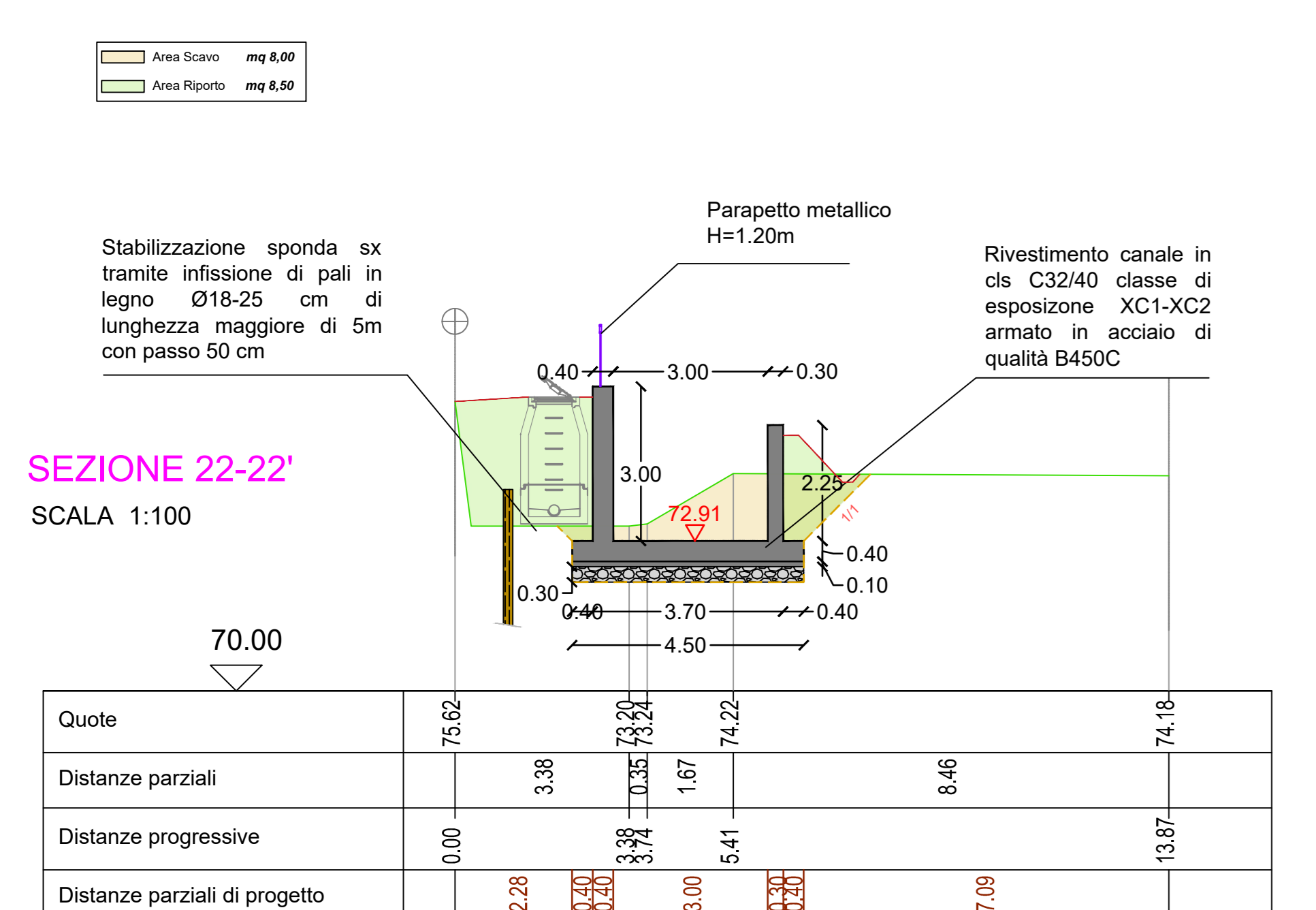
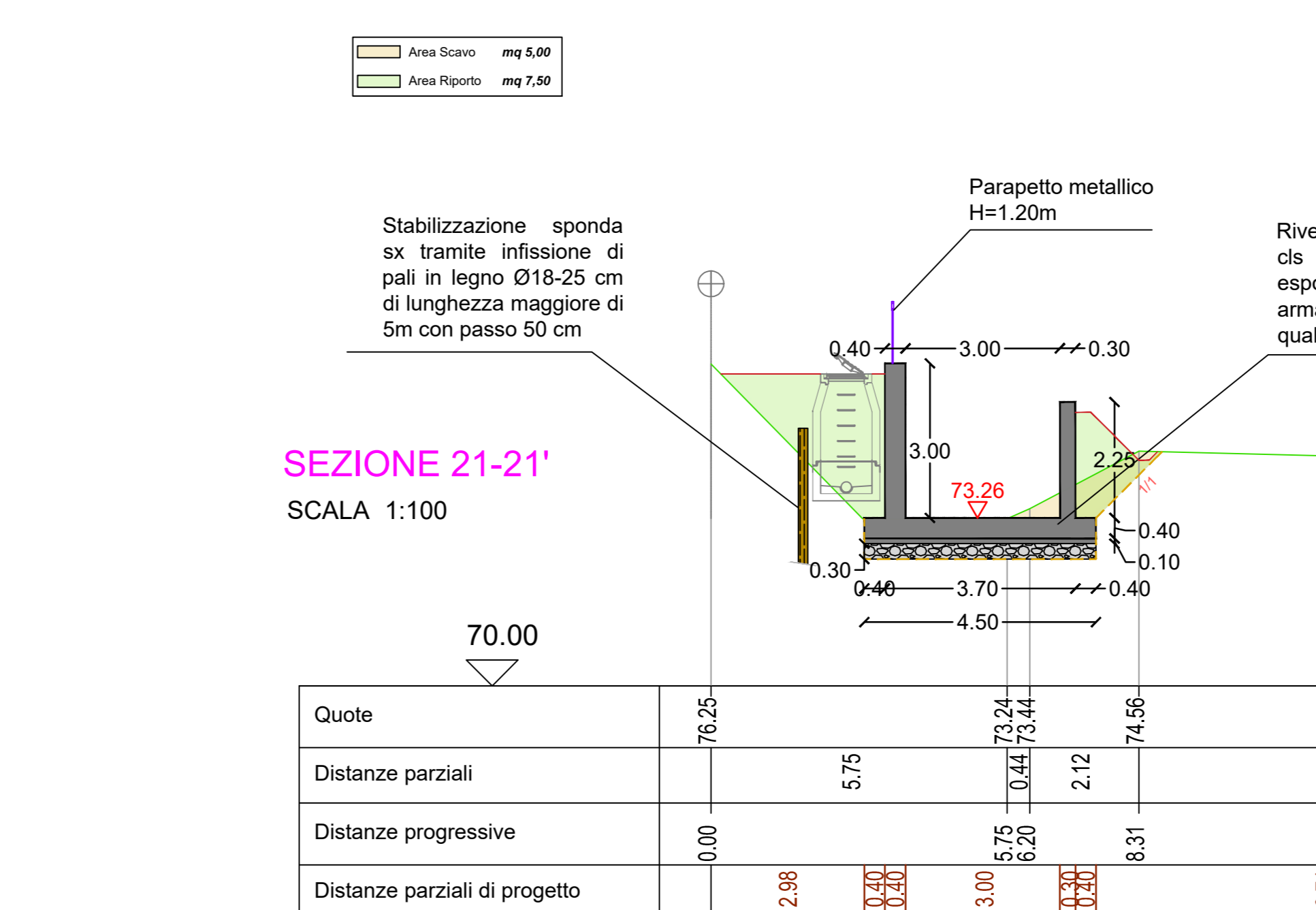
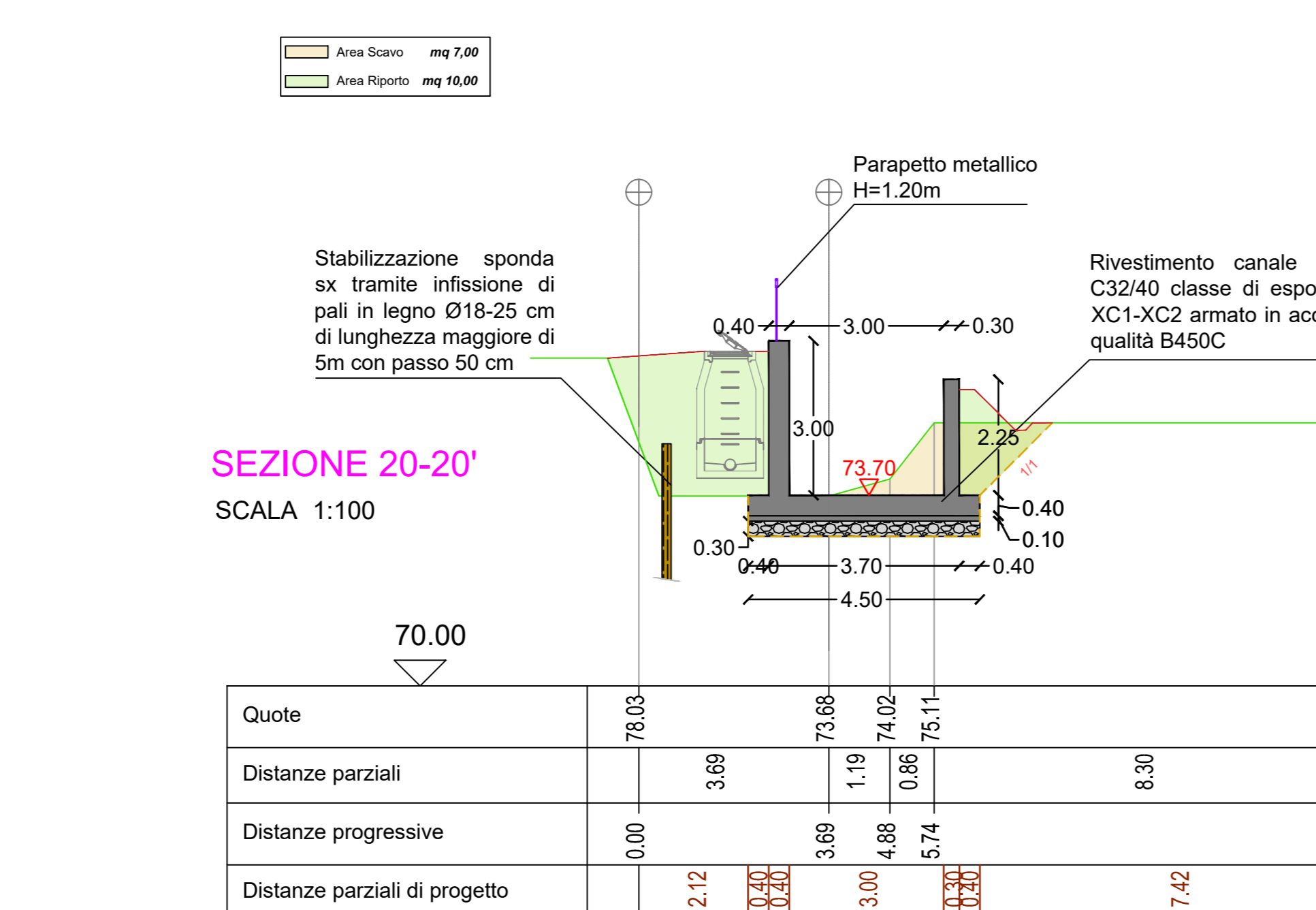
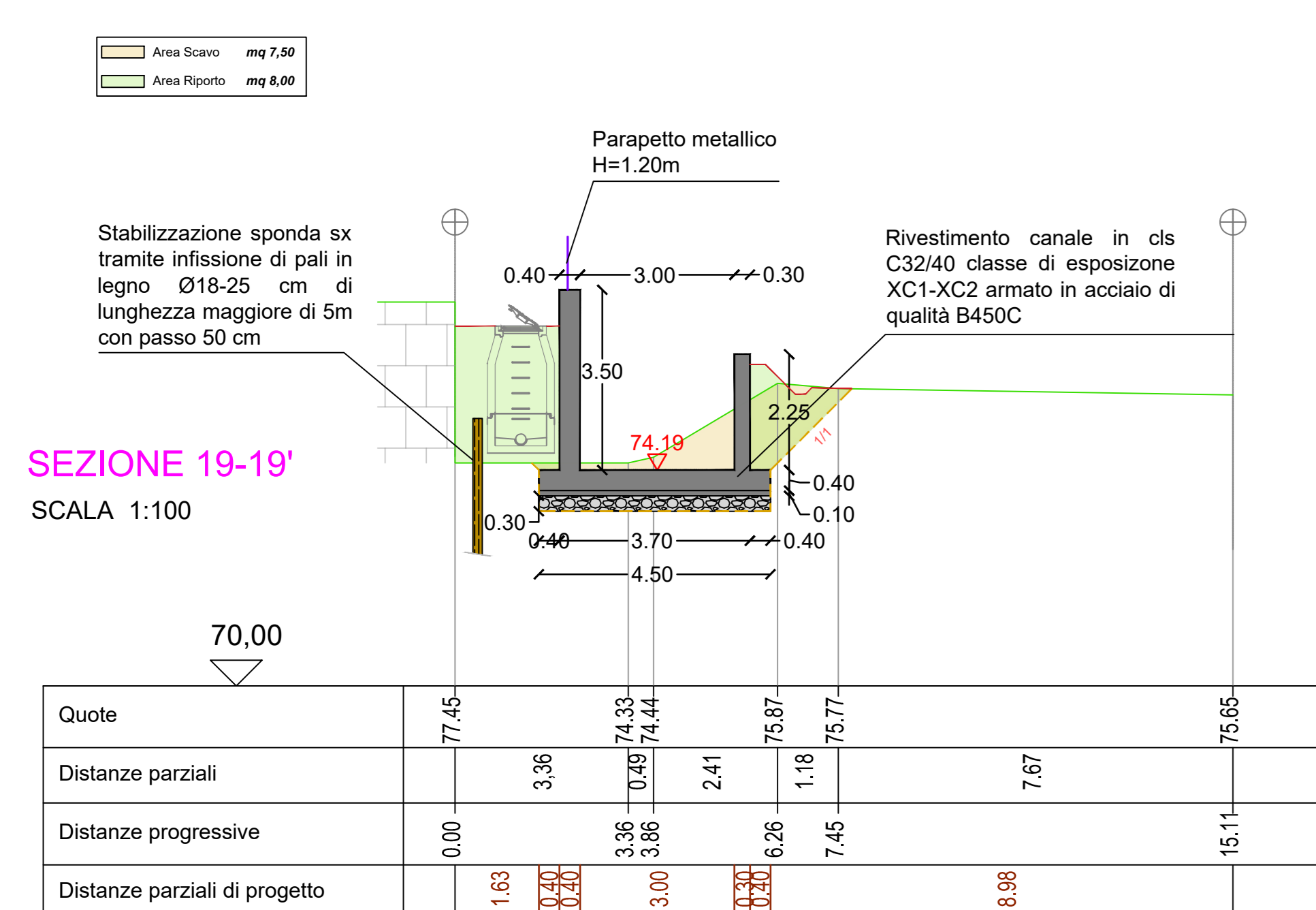
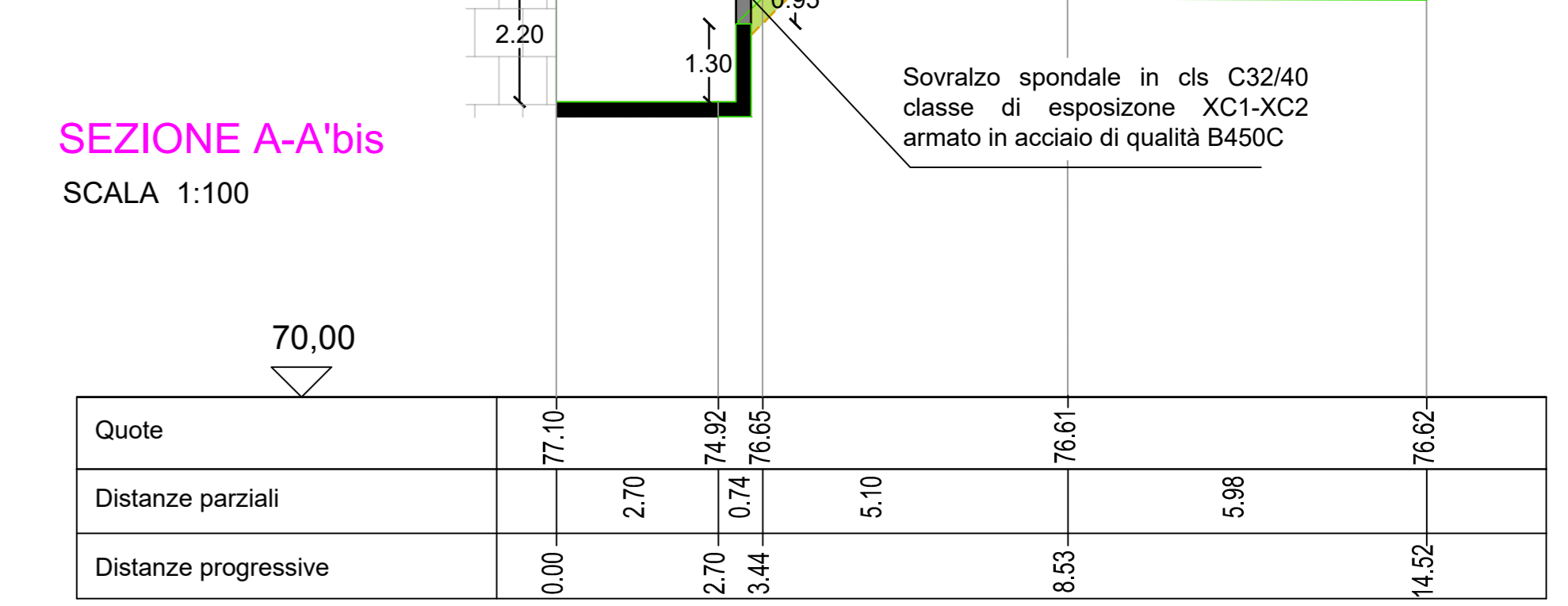
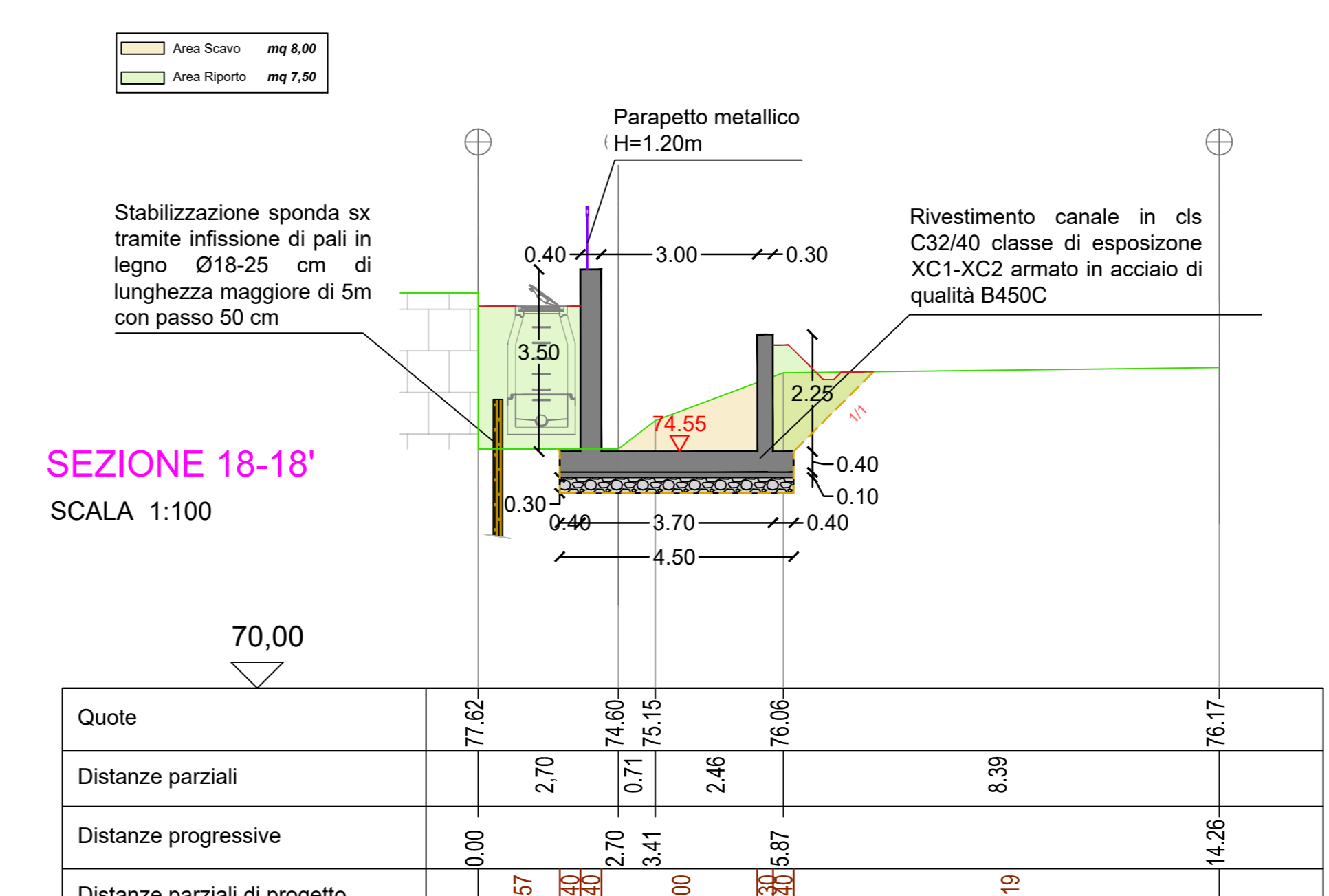
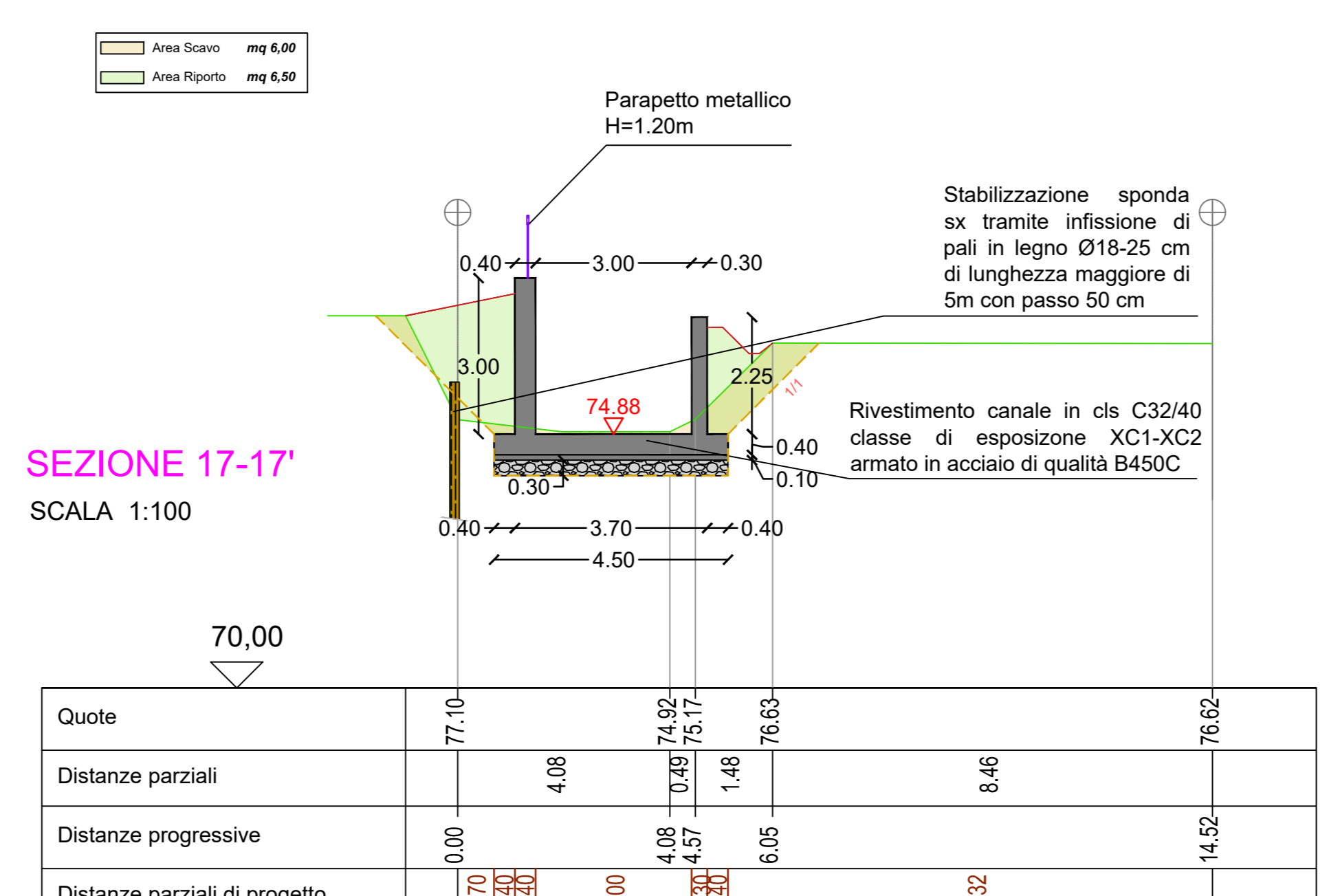
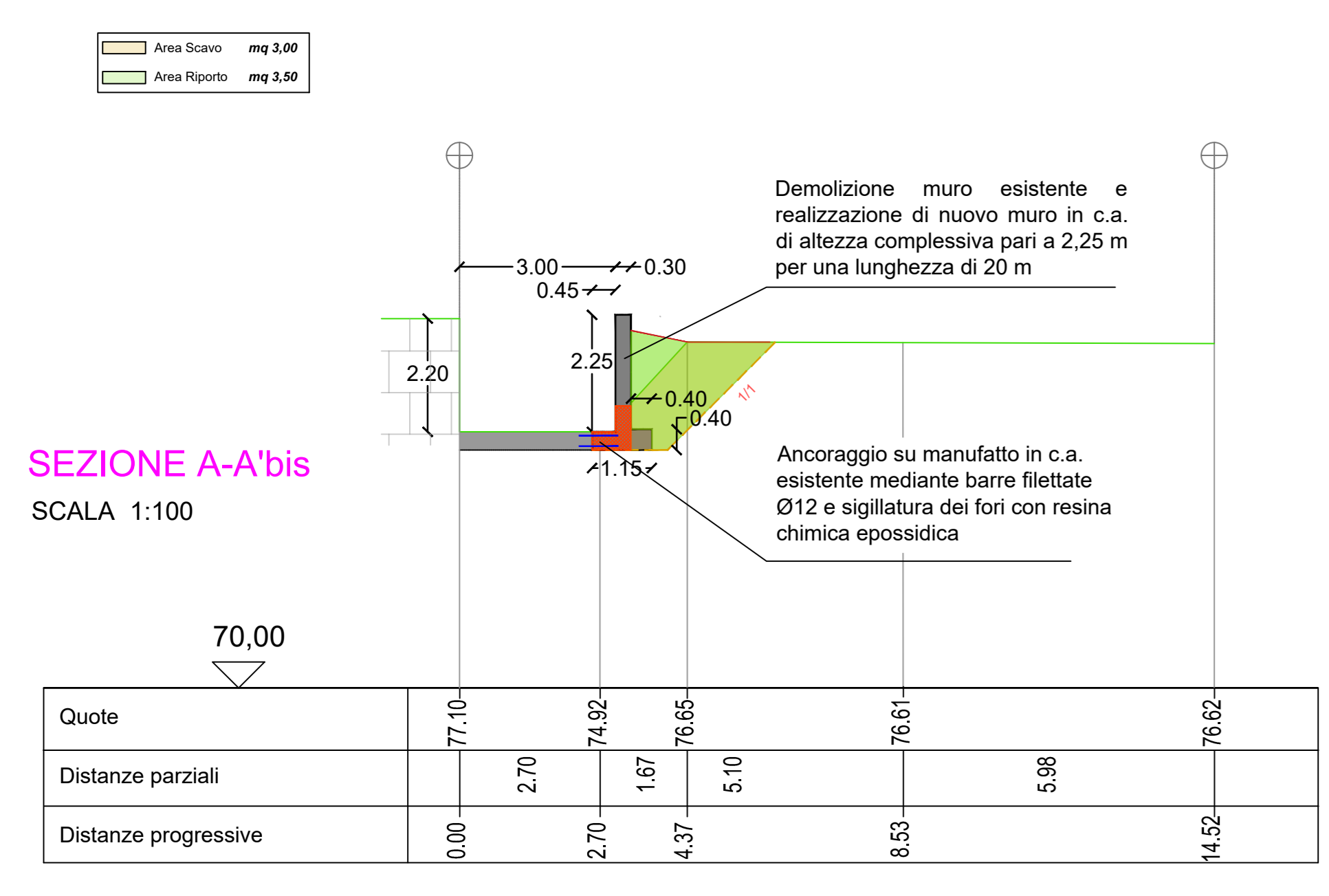
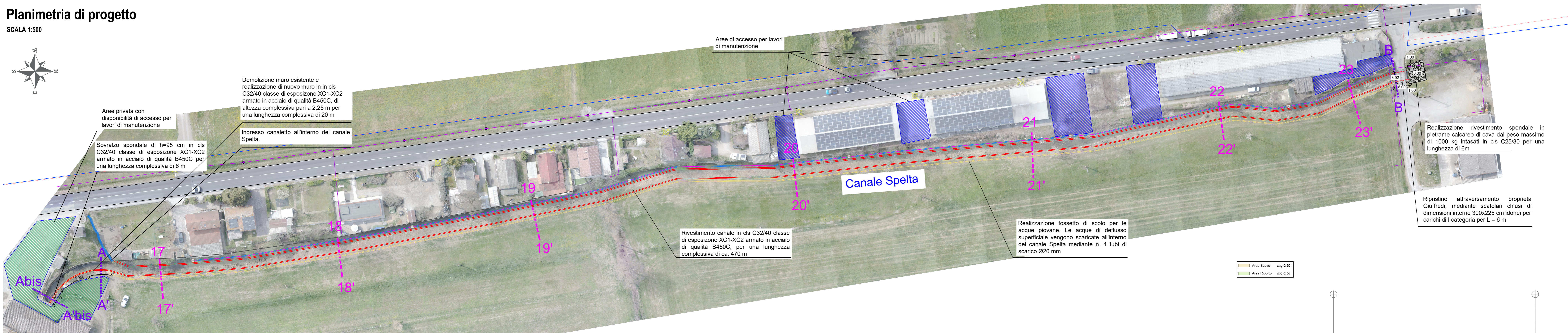
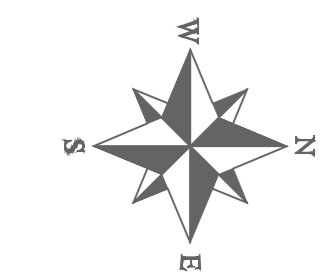


Planimetria di progetto

SCALA 1:500



LEGENDA

- Tracciato di progetto
- Sezione rilevata
- Sottofondazione in magrone 42.5 R
- Sottofondo in ghiaia di sorte di fiume

CONSORZIO BONIFICA PARMENSE

RIQUALIFICAZIONE E MANUTENZIONE STRAORDINARIA DEL CANALE SPELTA AI FINI DEL RISPARMIO IDRICO E DELLA MESSA IN SICUREZZA - 1° LOTTO

CUP: G58B23000090001

PROGETTO DI FATTIBILITA' TECNICO-ECONOMICA

Consorzio Bonifica Parmense

TITOLO ELABORATO: ELABORATO

PLANIMETRIA DELL'INTERVENTO E SEZIONI DI PROGETTO

SCALA: **04.03** VARIE

IL PROGETTISTA: Ing. Giulia Manardi

COLLABORATORE: Ing. Alessio Gianni

IL RESPONSABILE UNICO DEL PROCEDIMENTO: Ing. Chiara Moduri

NO	DATA	REVISIONE	REDAZIONE	VERIFICA	APPROVAZIONE
1	12/2025	Fattibilità tecnico economica	Ing. Gianni	Ing. Manardi	Ing. Moduri

RIPRODUZIONE O CONSEGNA A TERZI SOLO SECONDO SPECIFICA AUTORIZZAZIONE