



Discarica per rifiuti non pericolosi di Finale Emilia

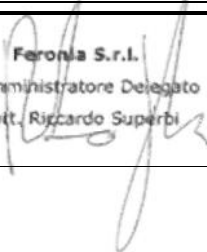
Valutazione di Impatto Ambientale

L.R. 9/99 come integrata ai sensi del D. Lgs. 152/06 e s.m.i.


STUDIO DI IMPATTO AMBIENTALE
Ottimizzazione dell'area tecnologica esistente
con adeguamento della capacità volumetrica

ELABORATO 4.1

Mappe di diffusione delle sostanze odorigene

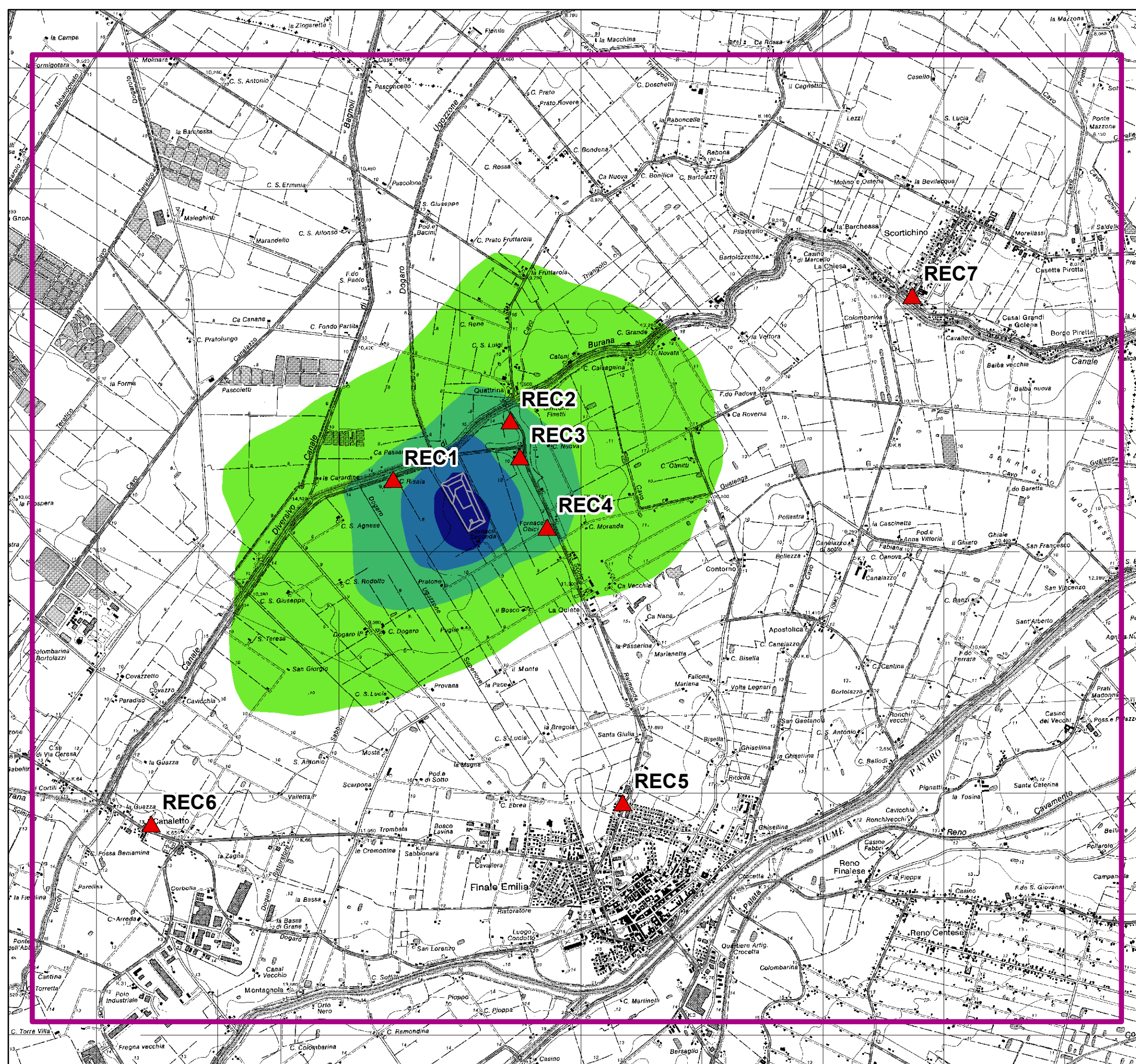
Approvato	R. Superbi	 Feronia S.r.l. L'Amministratore Delegato dott. Riccardo Superbi	
Controllato	C. Faraone		
Redatto	P. Zoppellari Zoppellari & Associati		
Rev.	01	Data	17/06/2016
Cod. Doc		Pagine	1 di 6

zoppellari & associati
società di ingegneria



PAOLO ZOPPELLARI
INGEGNERE
LAUREA SPECIALISTICA
Sezione: A
N° 5589/A

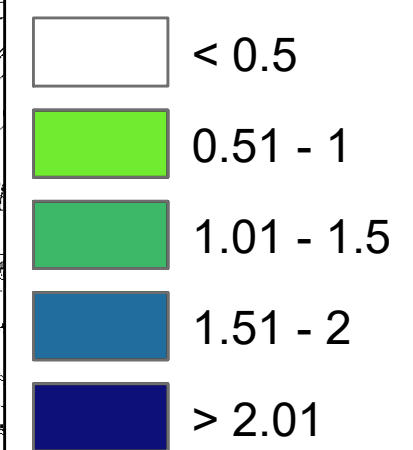
Viale V. Raineri 17 - 48121 Ravenna
Tel. 0544 404877 - Fax 0544 281136
www.zeiassociati.it - info@zeiassociati.it

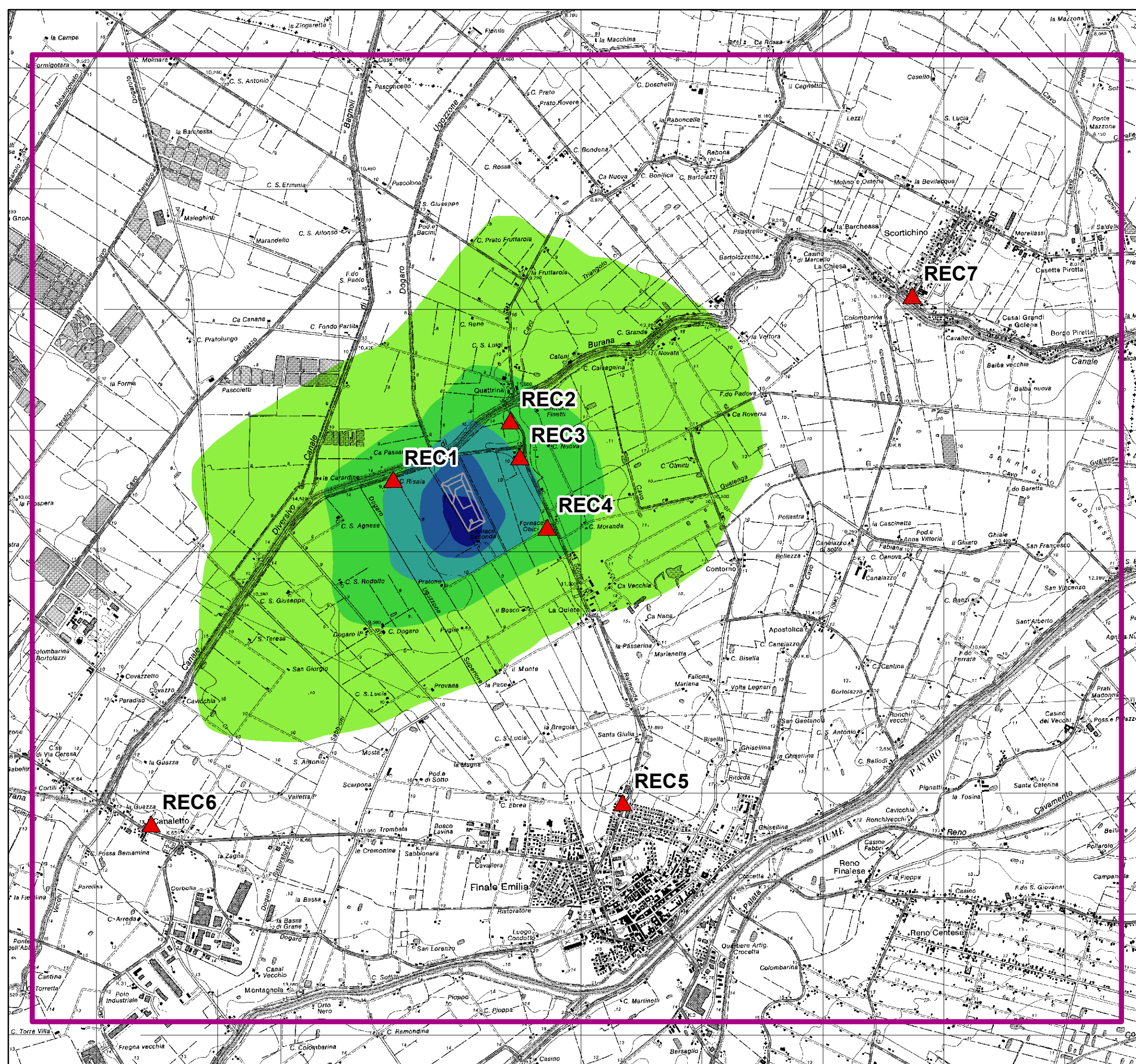


Legenda

- ▲ Recettori
- Area di studio
- Coperture Anno 2019

98°perc. Conc. media Oraria
[OU/m3]





Legenda



Recettori



Area di studio



Coperture Anno 2019

98°perc. Conc. Oraria di picco
[OU/m³]



< 1



1.01 - 2



2.01 - 3



3.01 - 4

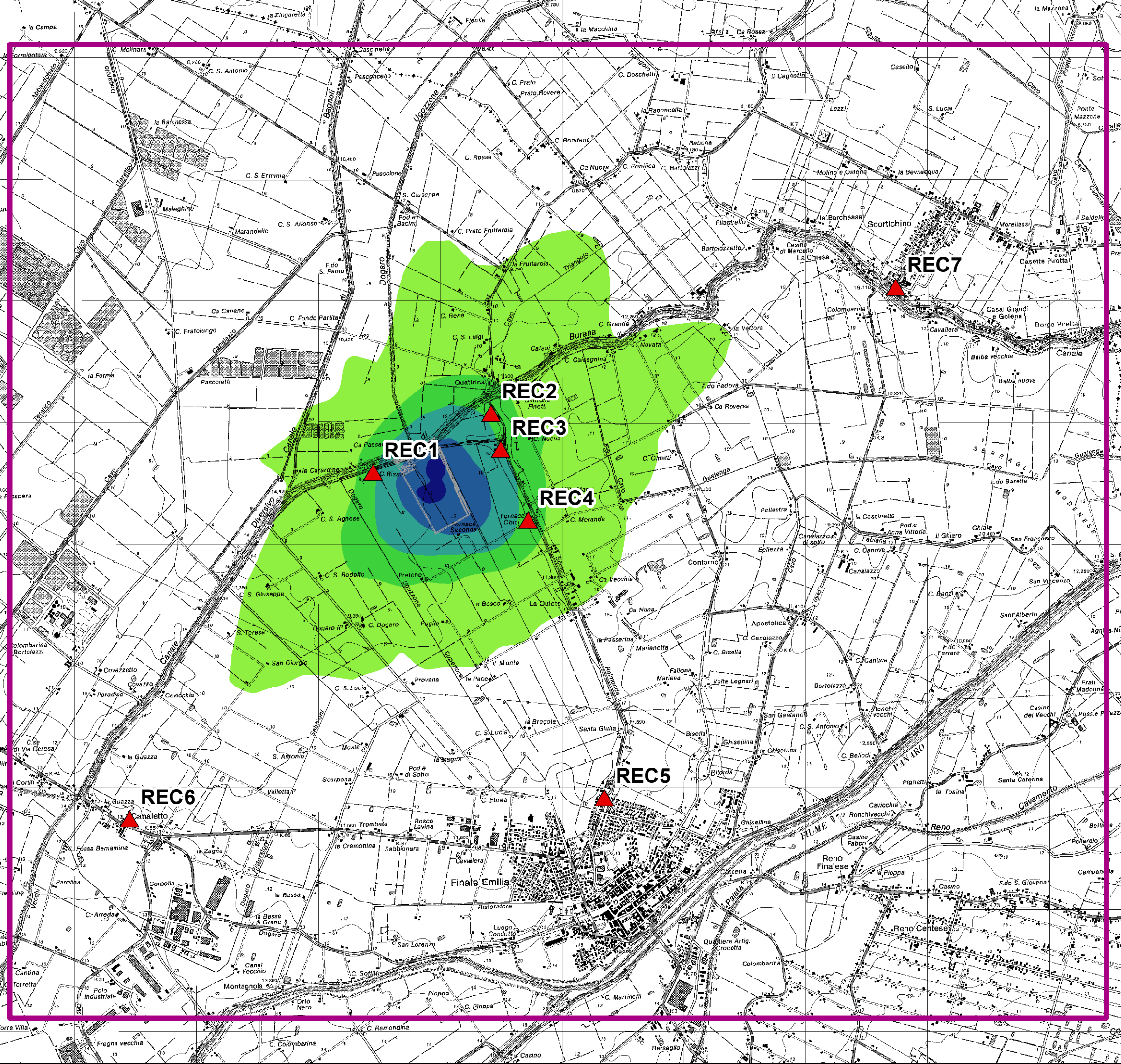
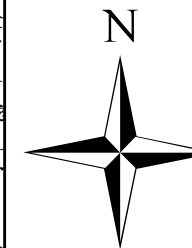


4.01 - 5



> 5.01











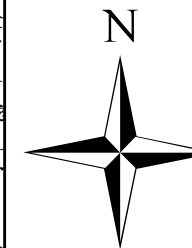
Legenda

-  Recettori
-  Area di studio
-  Layout

CH₄-Conc. Media Giornaliera mg/m³

-  0 - 0.1
-  0.11 - 0.2
-  0.21 - 0.3
-  0.31 - 0.5
-  0.51 - 1
-  1.01 - 2.27









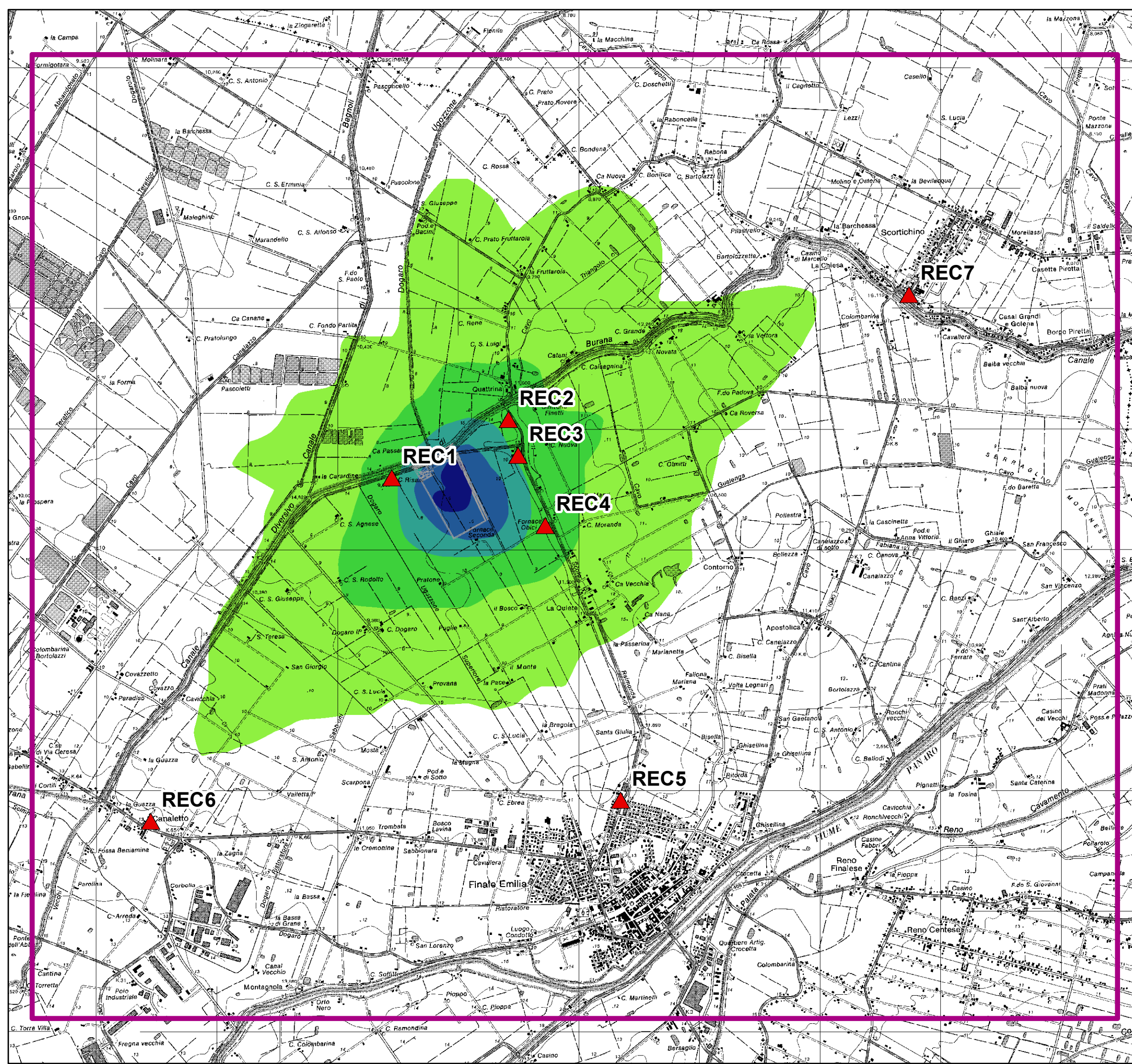


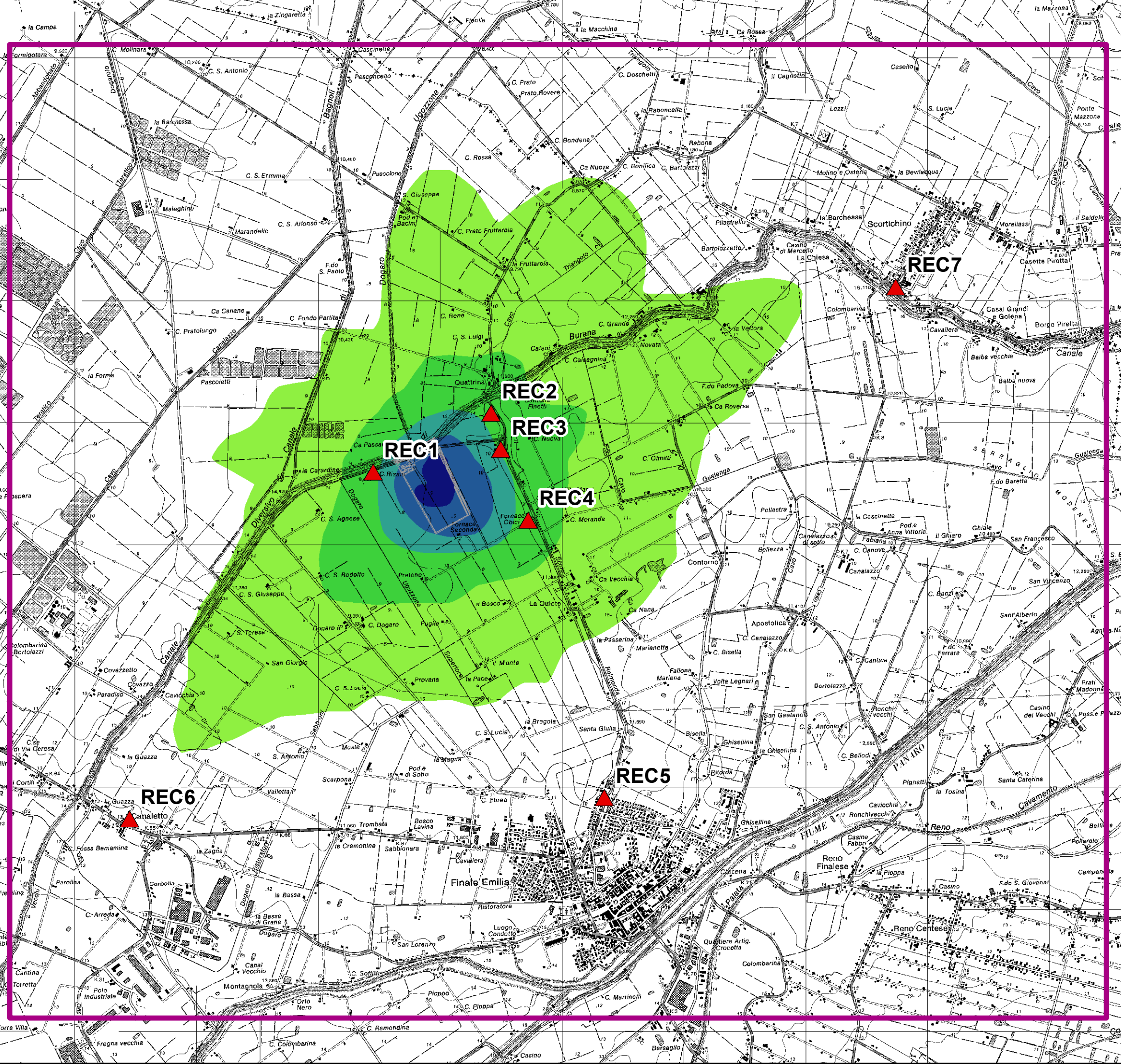
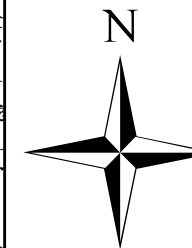
Legenda

-  Recettori
-  Area di studio
-  Layout

H2S-Conc. Media Giornaliera µg/m3

-  0 - 0.05
-  0.06 - 0.1
-  0.11 - 0.2
-  0.21 - 0.3
-  0.31 - 0.5
-  0.51 - 1.38











Legenda

-  Recettori
-  Area di studio
-  Layout

NH3-Conc. Media Giornaliera µg/m3

-  0 - 0.005
-  0.006 - 0.01
-  0.011 - 0.02
-  0.021 - 0.03
-  0.031 - 0.05
-  0.051 - 0.14

